

B

BFE
BRUCHA Food
ENGINEERING



picture: Jean-Pierre Corpataux

PROJECT
development

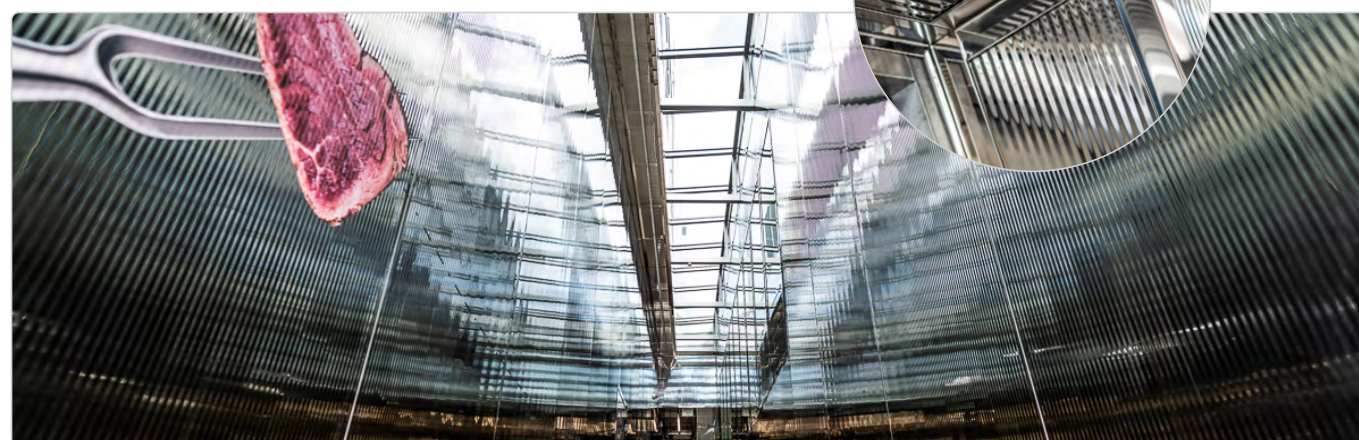
With decades of experience

at your side.

You hand over the planning and construction of your food production facility to us and therefore rely on cost certainty, adherence to delivery dates and excellent quality of execution.

We know the special features of the food industry, coordinate all subcontractors for you and support you in coordinating your future operating processes.

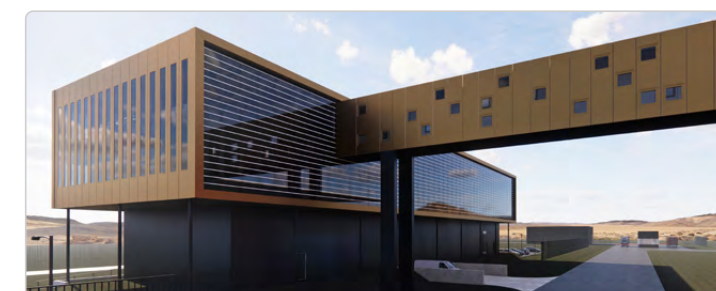
Experienced specialists from the domain of architecture, technical building equipment, structural planning, project management, production and logistics work together on the implementation of your project.



BRUCHA Food Engineering

We accompany you

- from the first idea -



PROJECT DEVELOPMENT

PROCESS PLANNING	ARCHITECTURE	TWP	TGA	PM	AVA	local BUILDING supervision
<ul style="list-style-type: none"> Actual analysis Target specifications Layout Room book Material flow Personnel flow 	<ul style="list-style-type: none"> Leading the planning process Coordination of the expert planners Coordination of mechanical engineering and logistics Building planning from preliminary design to execution 	<ul style="list-style-type: none"> Pre-statics Static dimensioning Static calculation Formwork and reinforcement plans Steel construction plans 	<ul style="list-style-type: none"> Heating/ventilation/sanitation Cold Electric Planning and tendering of engineering services 	<ul style="list-style-type: none"> Cost planning Cost control Time scheduling Construction scheduling 	<ul style="list-style-type: none"> Tendering Allocation Billing Contracts 	<ul style="list-style-type: none"> Coordination of the executing companies Schedule control Quality inspection Final approval Supplementary system

BRUCHA Food ENGINEERING
Gesellschaft m.b.H.

Headoffice:

Rusterstraße 33
AT-3451 Michelhausen

Branch West:

Bleichenweg 14a
AT-6020 Innsbruck

phone: +43 2275 58 75
email: office@brucha-fe.com

VAT-No.: ATU75227103

Contact:

DI Thomas Walder
mobile: +43 676 83 583 500
email: t.walder@brucha-fe.com

Martin Katzlinger
mobile: +43 676 83 583 379
email: m.katzlinger@brucha-fe.com



brucha.com/bfe