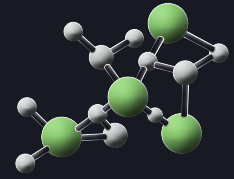


BRUCHA panel FP

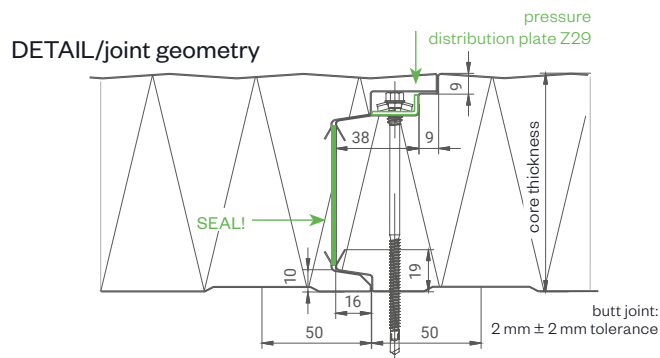
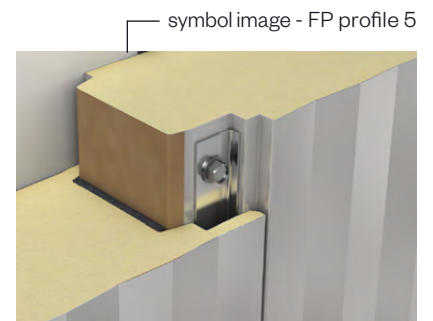
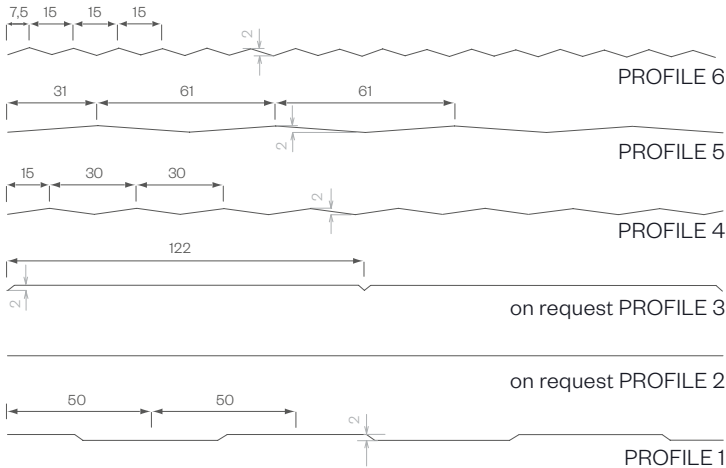
facade concealed fastened

PIR+
nonhalogen

iQTec[®]
foam technology[®]



exterior PROFILE options - close-up



PANEL TYPE	FP 60	FP 80	FP 100	FP 120	FP 140	FP 150	FP 160
core thickness mm	60	80	100	120	140	150	160
PIR+ non-halogen U-value W/m ² K acc. EN 14509 including joint section	0.404	0.275	0.216	0.179	0.153	0.142	0.133
iQTec on request U-value W/m ² K acc. EN 14509 including joint section	0.349	0.237	0.186	0.154	0.131	0.122	0.115
weight kg/m ²	11.24	12.04	12.84	13.64	14.44	14.84	15.24

MANUFACTURING TOLERANCES

in line with EN 14509

SOUND INSULATION

26 dB at 60/80 mm, 27 dB from 100 mm core thickness

MANUFACTURING LENGTHS

max. 16.0 m (extra-long transport from 13.6 m)

TEMPERATURE RESISTANCE

80 °C

SPAN WIDTH TABLES

according SandStat. calculation

FIRE BEHAVIOR

in line with EN 13501-1, Euroclass **Bs1d0**

BRUCHA[®]

PIR+
nonhalogen

iQTec
foam technology®

BRUCHA panel FP

facade concealed fastened



DESIGN AND SURFACES Standard - coil-coated, hot-dip galvanised steel sheet

EXTERIOR

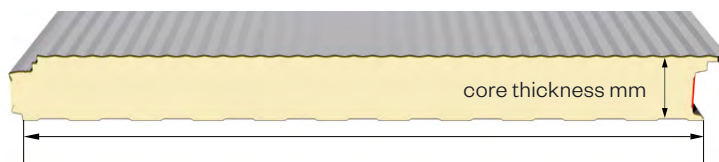
- Exposed side 25 µm polyester coating with a PVC protective film (not UV-resistant - protect from direct sunlight).
The film must be removed before installation or immediately afterwards.
- profile 5 = Standard, for other profiles see FP PROFILE options
- metal gauge: 0.6 mm (smaller metal gauge on request)

INTERIOR

- Exposed side 25 µm polyester coating with a PVC protective film (not UV-resistant - protect from direct sunlight).
The film must be removed before installation or immediately afterwards.
- profile 1 = standard (profile 2 and 3 on request)
- metal gauge: 0.5 mm (smaller metal gauge on request)

INSULATION CORE

- nonhalogen** PIR/polyurethane rigid foam, approx. 96 % closed cells, continuously foamed
- absolutely no chlorofluorocarbons or halogenated chlorofluorocarbons - pentane foam process
- low thermal conductivity
- securely attached to the steel sheet
- density approx. 40 kg/m³



construction width 1100 mm (1000 mm special width on request)

STANDARD COLORS

in accordance with BASIC color range

PANEL CONNECTION

Tongue and groove system in which the special labyrinth profile allows the screw head to be countersunk and fully covered by the next panel – **covered, concealed mounting**. The integrated seals guarantee maximum wind proofing.

The panels interlink precisely with no thermal bridge.

BRUCHA panel FP with PIR/polyurethane core can be combined with BRUCHA panel FP-F with mineral wool core using an adaptor panel.

TENDER TEXT

download from: brucha.com

EXTERNAL MONITORING

National and international tests and quality standards. We will send the certificates on request.



brucha.com

