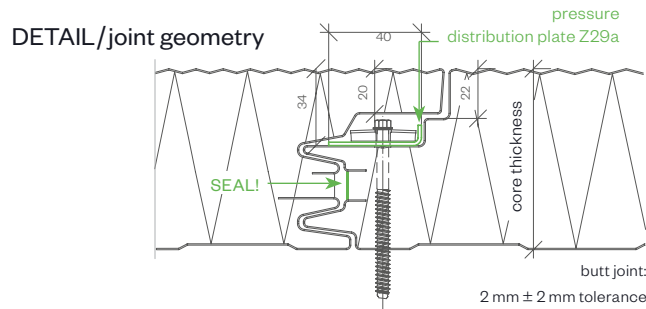
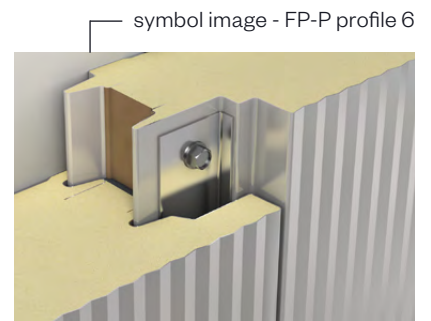
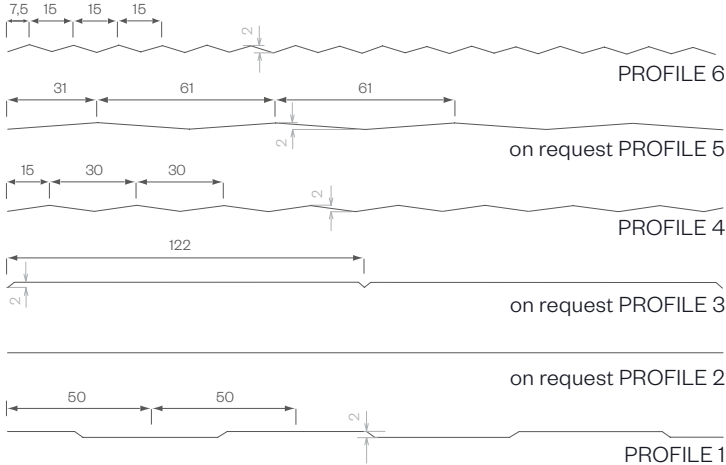


BRUCHA panel FP-P facade PREMIUM

concealed fastened

exterior PROFILE options - close-up



| PANEL TYPE | FP-P 80 | FP-P 100 | FP-P 120 | FP-P 140 | FP-P 160 | FP-P 180 | FP-P 200 |
|---|---------|----------|----------|----------|----------|----------|----------|
| core thickness mm | 80 | 100 | 120 | 140 | 160 | 180 | 200 |
| PIR+ non-halogen U-value W/m ² K acc. EN 14509 including joint section | 0.278 | 0.217 | 0.180 | 0.153 | 0.134 | 0.119 | 0.107 |
| iQTec <i>on request</i> U-value W/m ² K acc. EN 14509 including joint section | 0.239 | 0.187 | 0.155 | 0.132 | 0.115 | 0.102 | 0.092 |
| weight kg/m ² | 11.75 | 12.55 | 13.35 | 14.15 | 14.95 | 15.75 | 16.55 |

MANUFACTURING TOLERANCES

in line with EN 14509

SOUND INSULATION

26 dB at 80 mm, 27 dB from 100 mm core thickness

MANUFACTURING LENGTHS

max. 16.0 m (extra-long transport from 13.6 m)

TEMPERATURE RESISTANCE

80 °C

SPAN WIDTH TABLES

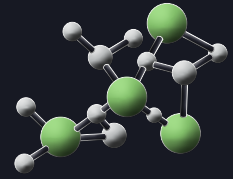
according SandStat. calculation

FIRE BEHAVIOR

in line with EN 13501-1, Euroclass **Bs1d0**

PIR+
nonhalogen

iQTec
foam technology®



BRUCHA®

PIR+
nonhalogen

iQTec
foam technology®

BRUCHA panel FP-P facade PREMIUM

concealed fastened



DESIGN AND SURFACES Standard - coil-coated, hot-dip galvanised steel sheet

EXTERIOR

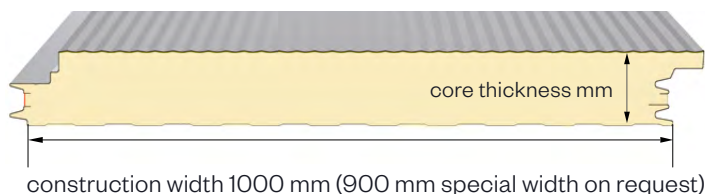
- Exposed side 25 µm polyester coating with a PVC protective film (not UV-resistant - protect from direct sunlight).
The film must be removed before installation or immediately afterwards.
- profile 6 = Standard, for other profiles see FP-P PROFILE options
- metal gauge: 0.6 mm (smaller metal gauge on request)

INTERIOR

- Exposed side 25 µm polyester coating with a PVC protective film (not UV-resistant - protect from direct sunlight).
The film must be removed before installation or immediately afterwards.
- profile 1 = standard (profile 2 and 3 on request)
- metal gauge: 0.5 mm (smaller metal gauge on request)

INSULATION CORE

- **nonhalogen** PIR/polyurethane rigid foam, approx. 96 % closed cells, continuously foamed
- absolutely no chlorofluorocarbons or halogenated chlorofluorocarbons - pentane foam process
- low thermal conductivity
- securely attached to the steel sheet
- density approx. 40 kg/m³



STANDARD COLORS

in accordance with BASIC color range

PANEL CONNECTION

Double tongue and groove system in which the special labyrinth profile allows the screw head to be countersunk and fully covered by the next panel – **covered, concealed fastened**. The integrated seals guarantee maximum wind proofing. The panels interlink precisely with no thermal bridge. The PREMIUM FP-P facade panel offers outstanding structural characteristics, as well as enabling even greater span widths through the use of the pressure distribution plate.

TENDER TEXT

download from: bruchacom

EXTERNAL MONITORING

National and international tests and quality standards. We will send the certificates on request.



bruchacom

