

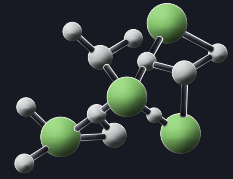
BRUCHA panel FP-P-S

facade PREMIUM Select

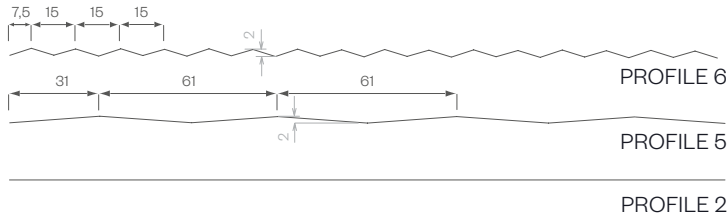
concealed fastened

PIR+
nonhalogen

iQTec[®]
foam technology[®]



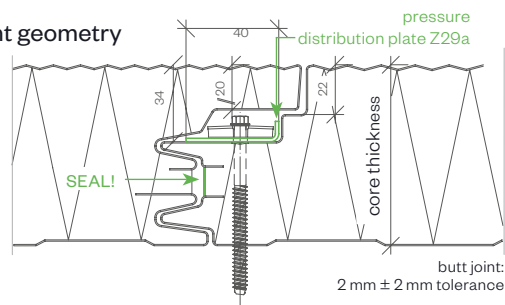
exterior PROFILE options - close-up



symbol image - FP-P-S profile 5-6-6-5



DETAIL/joint geometry



exterior PROFILE combination options

VARIANTS	1	2	3	4	5	6	7	8	9	10	11	12	13	14	15	16	17	18	19
profile pair	2	2 and 6						2 and 5						5 and 6					
RIGHT	2	2	2	6	2	6	6	2	2	5	2	5	5	5	5	6	6	5	6
panel orientation	2	2	6	2	6	2	6	2	5	2	5	2	5	5	6	5	5	6	6
	2	6	2	2	6	6	2	5	2	2	5	5	2	6	5	5	6	6	5
LEFT	2	6	6	6	2	2	2	5	5	5	2	2	2	6	6	6	5	5	5

PANEL TYPE	FP-P 80	FP-P 100	FP-P 120	FP-P 140	FP-P 160	FP-P 180	FP-P 200
core thickness mm	80	100	120	140	160	180	200
PIR+ non-halogen U-value W/m²K acc. EN 14509 including joint section	0.278	0.217	0.180	0.153	0.134	0.119	0.107
iQTec on request U-value W/m²K acc. EN 14509 including joint section	0.239	0.187	0.155	0.132	0.115	0.102	0.092
weight kg/m²	11.75	12.55	13.35	14.15	14.95	15.75	16.55

MANUFACTURING TOLERANCES

in line with EN 14509

SOUND INSULATION

26 dB at 80 mm, 27 dB from 100 mm core thickness

MANUFACTURING LENGTHS

max. 16.0 m (extra-long transport from 13.6 m)

TEMPERATURE RESISTANCE

80 °C

SPAN WIDTH TABLES

according SandStat. calculation

FIRE BEHAVIOR

in line with EN 13501-1, Euroclass **Bs1d0**

BRUCHA[®]

PIR+
nonhalogen

iQTec[®]
foam technology[®]

BRUCHA panel FP-P-S facade PREMIUM Select

concealed fastened



DESIGN AND SURFACES Standard - coil-coated, hot-dip galvanised steel sheet

EXTERIOR

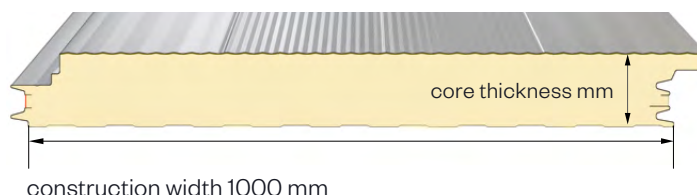
- Exposed side 25 µm polyester coating with a PVC protective film (not UV-resistant - protect from direct sunlight).
The film must be removed before installation or immediately afterwards.
- profiles 2, 5 and 6, making a total of 19 different profile combination options
- metal gauge: 0.6 mm (smaller metal gauge on request)

INTERIOR

- Exposed side 25 µm polyester coating with a PVC protective film (not UV-resistant - protect from direct sunlight).
The film must be removed before installation or immediately afterwards.
- profile 1 = standard (profile 2 and 3 on request)
- metal gauge: 0.5 mm (smaller metal gauge on request)

INSULATION CORE

- nonhalogen** PIR/polyurethane rigid foam, approx. 96 % closed cells, continuously foamed
- absolutely no chlorofluorocarbons or halogenated chlorofluorocarbons - pentane foam process
- low thermal conductivity
- securely attached to the steel sheet
- density approx. 40 kg/m³



STANDARD COLORS

in accordance with BASIC color range

PANEL CONNECTION

Double tongue and groove system in which the special labyrinth profile allows the screw head to be countersunk and fully covered by the next panel – **covered, concealed fastened**. The integrated seals guarantee maximum wind proofing.

The panels interlink precisely with no thermal bridge. The PREMIUM FP-P-S facade panel offers outstanding structural characteristics, as well as enabling even greater span widths through the use of the pressure distribution plate.

TENDER TEXT

download from: brucha.com

EXTERNAL MONITORING

National and international tests and quality standards. We will send the certificates on request.



brucha.com

