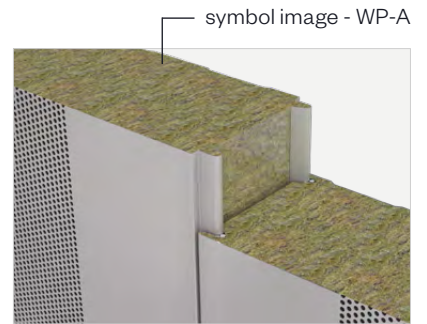
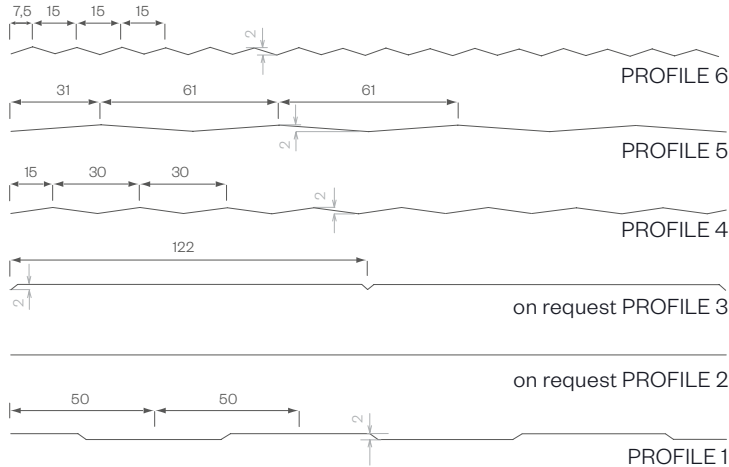


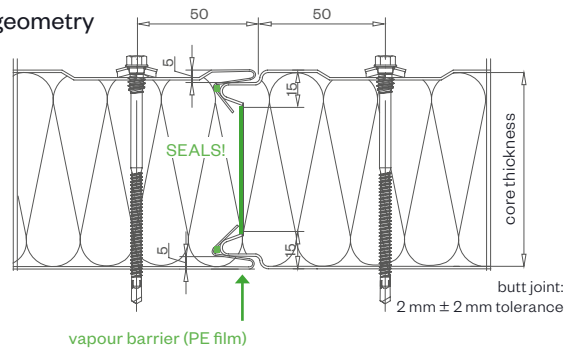
Acoustic wall exposed fastened



exterior PROFILE options - close-up



DETAIL/joint geometry



PANEL TYPE	WP-A 60	WP-A 80	WP-A 100	WP-A 120	WP-A 140	WP-A 150	WP-A 160	WP-A 180	WP-A 200	WP-A 240
core thickness mm	60	80	100	120	140	150	160	180	200	240
U-value W/m²K - EN 14509 including joint section	0.681	0.512	0.412	0.346	0.298	0.279	0.261	0.233	0.210	0.176
weight kg/m²	16.39	18.79	21.19	23.59	25.99	27.19	28.39	30.79	33.19	37.99

MANUFACTURING TOLERANCES

in line with EN 14509

SOUND INSULATION

32 dB (frequency dependent)

MANUFACTURING LENGTHS

max. 15.9 m (extra-long transport from 13.6 m) **ATTENTION!** Danger of kinking due to heavy weight in the case of long panels!

SOUND-ABSORBER CLASS - B

SOUND ABSORPTION COEFFICIENT α_w

0.90 in line with test report MA39-VFA 2017-0169.02

APPROVAL based on general building inspection
approval Z-10.49-610

FIRE BEHAVIOR

in line with EN 13501-1, Euroclass A2s1d0, **non-combustible**



fire protection

BRUCHA panel WP-A

Acoustic wall exposed fastened



DESIGN AND SURFACES Standard - coil-coated, hot-dip galvanised steel sheet

EXTERIOR

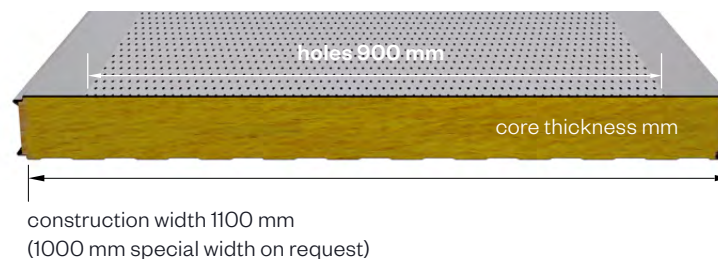
- Exposed side 25 µm polyester coating with a PVC protective film (not UV-resistant - protect from direct sunlight).
The film must be removed before installation or immediately afterwards.
- profile 1 = Standard, for other profiles see WP-A PROFILE options
- metal gauge: 0.6 mm (smaller metal gauge on request)

INTERIOR

- Exposed side 25 µm polyester coating with a PVC protective film (not UV-resistant - protect from direct sunlight).
The film must be removed before installation or immediately afterwards.
- profile 2
- hole proportion: 32.5 %
- bore diameter: 3 mm round bore, offset (5 mm distance)
- holes: DIN RV 3-5 (R3T5) (730-000)
- metal gauge: 0.6 mm (smaller metal gauge on request)

INSULATION CORE

- structural, web-oriented mineral fibre wool
- securely attached to the sheet steel shell
- density approx. 120 kg/m³, 140 kg/m³ available on request
- mat: glass fibre mat SM60/10 as trickle protection



STANDARD COLORS

in accordance with BASIC color range

PANEL CONNECTION

Tongue and groove system in which the panels interlink precisely with no thermal bridge.

TENDER TEXT

download from: brucha.com

EXTERNAL MONITORING

National and international tests and quality standards. We will send the certificates on request.

VAPOUR DIFFUSION

Determined by climatic conditions inside building. Panels must be installed vapour tight.

PANEL INSTALLATION

When working with our products, please follow our installation guidelines at brucha.com/downloads



brucha.com

