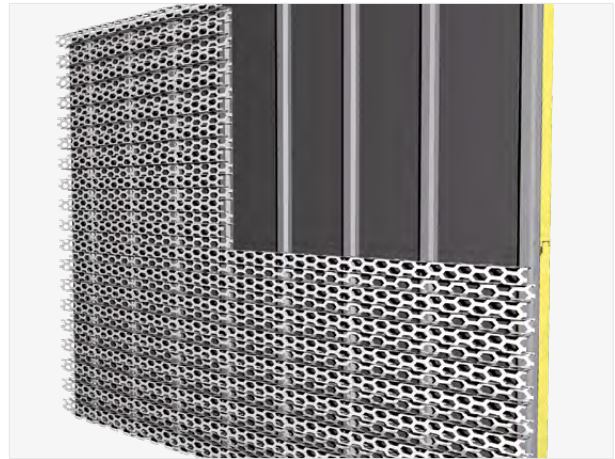


# BRUCHA panel carrier-system facade PREMIUM - FP-P

## Design flexibility

The BRUCHA panel carrier-system was developed in combination with mounting profiles. Different types of facade elements can be used for visual design.

The carrier panel is a durable series product with visible mounting, with the standard design using a BRUCHA cladding panel, which brings together all the advantages of construction using insulated sandwich elements.

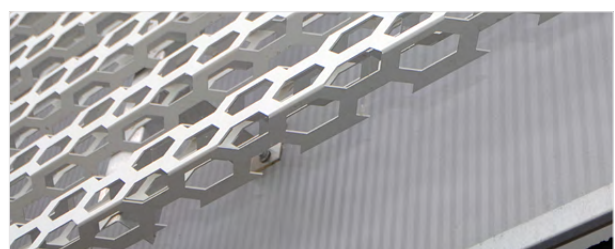


**Unlimited design freedom combined with perfect planning, production and assembly gives your building its own identity.**

**We excel in providing individual consultancy!**

## Characteristics

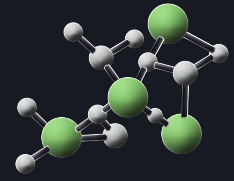
- Visible mounting.
- Available as standard in a construction width of 1,000 mm (900 mm on request).
- Insulation core made of **nonhalogen** PIR/polyurethane rigid foam with reduced thermal conductivity, approx. 96 % closed cell, securely attached to the steel sheet.  
Density approx. 40 kg/m<sup>3</sup>, absolutely no chlorofluorocarbons or halogenated chlorofluorocarbons, pentane foam process.
- Fire class in conformity with EN 13501-1, Euroclass Bs1d0.
- Can be used both horizontally and vertically.
- Inside supplied with 25 µm polyester coating in RAL 9002 as standard.
- On request, the inner coating can be made from non-contact foodsafe PVC 25 µm or foodsafe PVC 150 µm.
- Standard lengths available: 2 m to 16 m.
- Lengths between 40 cm and 2 m available on request at an additional cost.
- From panel length of 13.6 m - extra-long transport, transport costs on request.
- 10-year manufacturer's guarantee on structural and thermal performance.
- Information on the available coatings and colors can be found in the BRUCHA color range.



# BRUCHA panel carrier-system facade PREMIUM - FP-P

PIR+  
nonhalogen

iQTec



## STRUCTURAL OPTIONS

For further information on the project-specific structural options, please get in touch with your personal contact at BRUCHA.

## THERMAL EFFICIENCY

BRUCHA panel insulation values in conformity with EN 14509.

## TOLERANCES

Manufacturing tolerances comply with EN 14509.

## CERTIFICATIONS

Certified in conformity with **ISO 14001** and **ISO 9001** environmental and quality management, and according the standard for responsible sourcing **BES 6001** - assessment score - **Very Good**. **Dibt**, **CE** and **Cradle to Cradle** certificate, project specific on request.

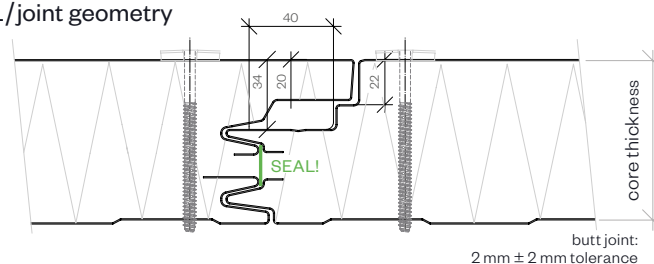
## FIRE RESISTANCE

**BRUCHA panel facade PREMIUM** has successfully passed the fire resistance tests that also remain valid when used as a carrier system.

Potential applications as a carrier system should be clarified on an individual basis with our Technical Department.

PANEL TYPE	FP-P 80	FP-P 100	FP-P 120	FP-P 140	FP-P 160	FP-P 180	FP-P 200
core thickness mm	80	100	120	140	160	180	200
PIR+ non-halogen U-value W/m <sup>2</sup> K acc. EN 14509 including joint section	0.278	0.217	0.180	0.153	0.134	0.119	0.107
iQTec <i>on request</i> U-value W/m <sup>2</sup> K acc. EN 14509 including joint section	0.239	0.187	0.155	0.132	0.115	0.102	0.092
weight kg/m <sup>2</sup>	11.75	12.55	13.35	14.15	14.95	15.75	16.55

DETAIL/joint geometry



**BRUCHA**®



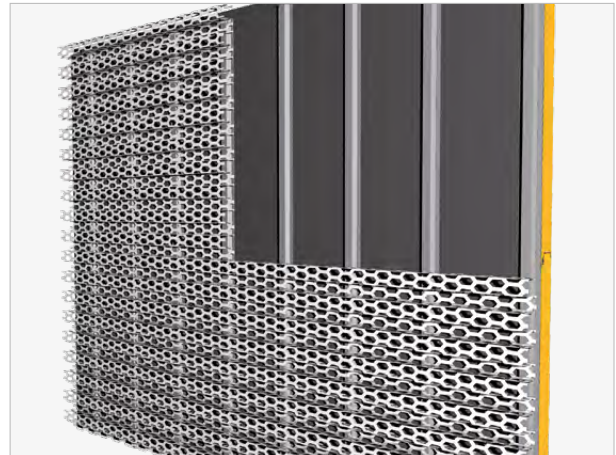
fire protection

# BRUCHA panel carrier-system facade - FP-F

## Design flexibility

The BRUCHA panel carrier-system was developed in combination with mounting profiles. Different types of facade elements can be used for visual design.

The carrier panel is a durable series product with visible mounting, with the standard design using a BRUCHA cladding panel, which brings together all the advantages of construction using insulated sandwich elements.

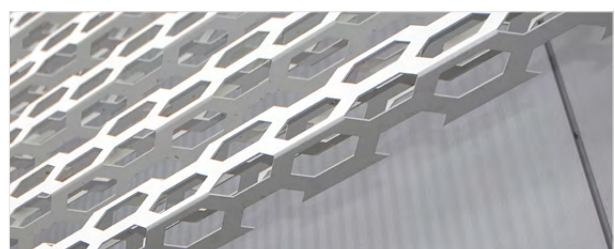


**Unlimited design freedom combined with perfect planning, production and assembly gives your building its own identity.**

**We excel in providing individual consultancy!**

## Characteristics

- Visible mounting.
- Available as standard in a construction width of 1,100 mm (1,000 mm on request).
- Insulating core made of structural, vertically-oriented mineral wool, securely attached to the steel sheet outer shells. Density approx. 120 kg/m<sup>3</sup>, 140 kg/m<sup>3</sup> available on request.
- Fire class in conformity with EN 13501-1, Euroclass A2s1d0, non-combustible.
- Can be used both horizontally and vertically.
- Inside supplied with 25 µm polyester coating in RAL 9002 as standard.
- On request, the inner coating can be made from non-contact foodsafe PVC 25 µm or foodsafe PVC 150 µm.
- Standard lengths available: 2 m to 15.6 m.
- Lengths between 40 cm and 2 m available on request at an additional cost.
- From panel length of 13.6 m - extra-long transport, transport costs on request.
- 10-year manufacturer's guarantee on structural and thermal performance.
- Information on the available coatings and colors can be found in the BRUCHA color range.



[brucha.com](http://brucha.com)

All information is considered to be subject to errors in composition or printing errors.

# BRUCHA panel carrier-system facade - FP-F



fire protection

## STRUCTURAL OPTIONS

For further information on the project-specific structural options, please get in touch with your personal contact at BRUCHA.

## THERMAL EFFICIENCY

BRUCHA panel insulation values in conformity with EN 14509.

## TOLERANCES

Manufacturing tolerances comply with EN 14509.

## CERTIFICATIONS

Certified in conformity with **ISO 14001** and **ISO 9001** environmental and quality management, and according the standard for responsible sourcing **BES 6001** - assessment score - **Very Good**. **Dibt, CE** and **FM approval** certificate, project specific on request.

## FIRE RESISTANCE

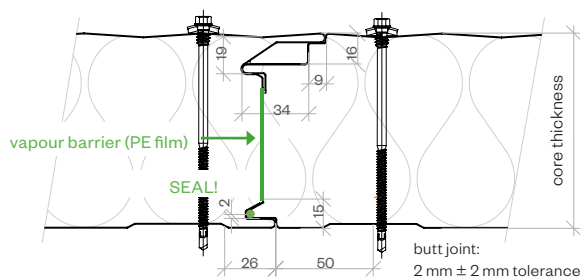
**BRUCHA panel fire protection cladding** has successfully passed the fire resistance tests that also remain valid when used as a carrier system.

Potential applications as a carrier system should be clarified on an individual basis with our Technical Department.

PANEL TYPE	FP-F 60	FP-F 80	FP-F 100	FP-F 120	FP-F 140	FP-F 150	FP-F 160	FP-F 180	FP-F 200	FP-F 240
core thickness mm	60	80	100	120	140	150	160	180	200	240
U-value W/m <sup>2</sup> K - EN14509 including joint section	0.781	0.540	0.427	0.355	0.305	0.285	0.267	0.237	0.214	0.178
weight kg/m <sup>2</sup>	16.38	18.78	21.18	23.58	25.98	27.18	28.38	30.78	33.18	37.98
fire resistance*	NPD	EI 90	EI 90	EI 120	EI 120	EI 120	EI 120	EI 120	EI 120	EI 120

\*Certificates must be checked for the usage case in question (horizontal/vertical/span width etc.).

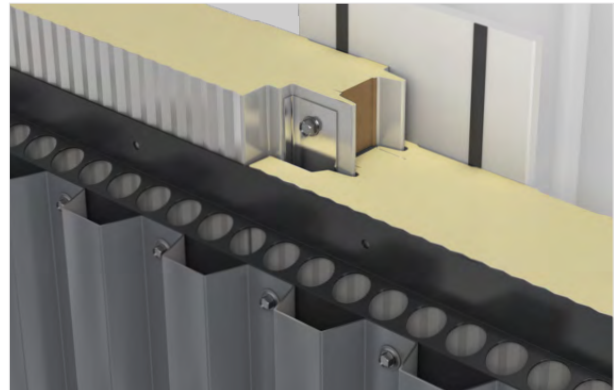
## DETAIL/joint geometry



# BRUCHA panel carrier-system

Before using the carrier system, the following points must be discussed and clarified with BRUCHA:

- Facade drawings, including details.
- Assembly plan of the panels, the rail system to be used and the design facade.
- Support structure conditioning.
- Wind loads, taking into account the facade facing.



## Mounting

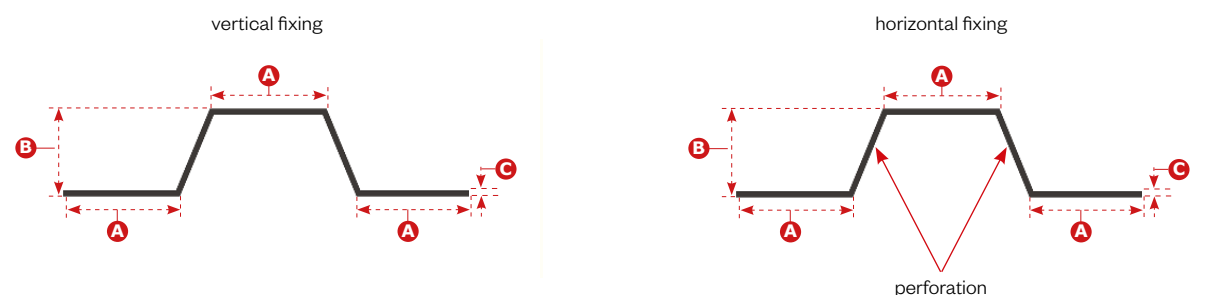
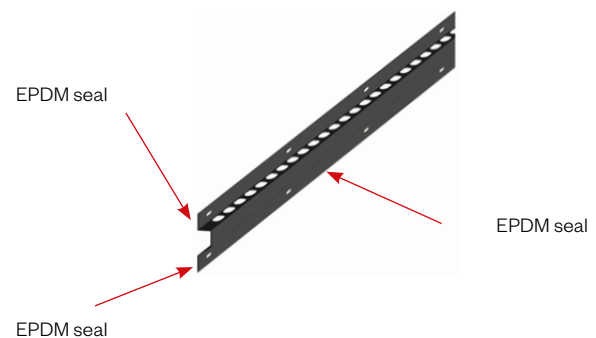
Rail profiles are used to mount the facade cladding on the carrier system panels. EPDM seals serve as corrosion protection between the profiles and the outer shell of the carrier panel. This prevents any scratches on the coating caused by thermal action and vibrations. If the design facade is also made out of metal, it will also be protected with EPDM where necessary. For the horizontal positioning of the profiles, we recommend perforated profiles in order to ensure good ventilation. You must ensure that there is sufficient drainage for moisture.

## Example of rail profile

I-facade 0191 Perfo  
EN AW-6063 T66  
2 mm anodised black aluminium (20µm)

includes:

- Mounting holes for the sandwich panel carriers
- EPDM contact breakers



The aluminium rail profile (0191) is intended for mechanical mounting of the facade cladding (facing shell) and has a special 20µm-thick anodised top layer in black.

**A** - 40 mm.    **B** - 40 mm.    **thickness** - 2 mm.    **length** - 3 m.



# BRUCHA panel carrier-system

---

