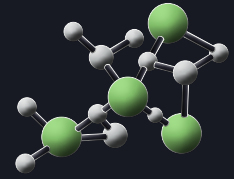


# BRUCHA panel DP

## €CO-roof

PIR+  
nonhalogen

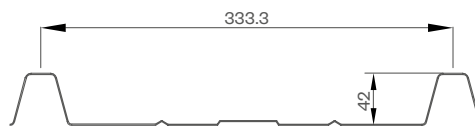
iQTec<sup>®</sup>  
foam technology<sup>®</sup>



Minimum roof pitch 3° (5.2 %)

TRAPEZOID PROFILE exterior

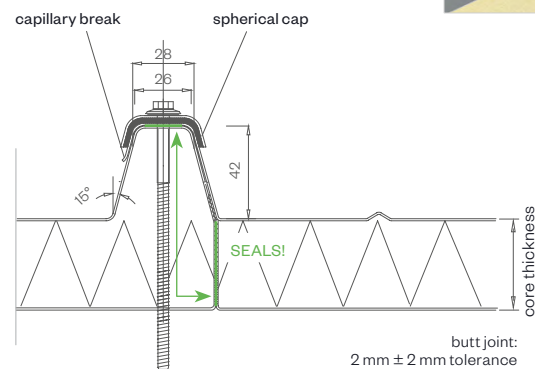
close-up



symbol image - €CO roof



DETAIL/joint geometry



PANEL TYPE	€CO 57	€CO 72	€CO 102
core thickness mm	15	30	60*
PIR+ nonhalogen U-value W/m <sup>2</sup> K - EN 14509 including joint section	1.211	0.661	0.341
iQTec <i>on request</i> U-value W/m <sup>2</sup> K - EN 14509 including joint section	1.068	0.575	0.294
weight kg/m <sup>2</sup>	5.45	6.07	7.32

\*on request

### MANUFACTURING TOLERANCES

in line with EN 14509

### FIRE BEHAVIOR

in line with EN 13501-1, Euroclass Bs1d0

### MANUFACTURING LENGTHS

max. 21.5 m (extra-long transport from 13.6 m)

### TEMPERATURE RESISTANCE

80 °C

**BRUCHA**<sup>®</sup>

# BRUCHA panel DP

## €CO-roof

DESIGN AND SURFACES Standard - coil-coated, hot-dip galvanised steel sheet

### EXTERIOR

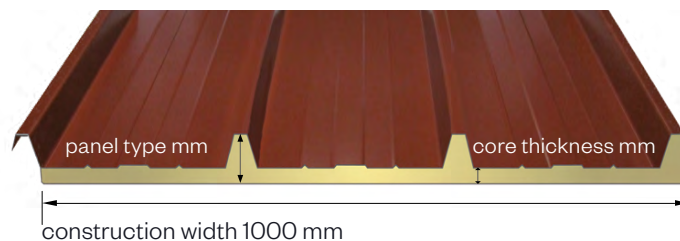
- Exposed side 25 µm polyester coating with a PVC protective film (not UV-resistant - protect from direct sunlight).  
The film must be removed before installation or immediately afterwards.
- profile: Trapezoidal profile, 42 mm (according to diagram)
- crown distance: 333.3 mm
- metal gauge: 0.6 mm (smaller metal gauge on request)

### INTERIOR

- Aluminium lining – Stucco white, layer thickness 80 µm, resistant to organic acids.
- Impairment of the visual impact is possible due to the thin interior shell.
- For areas where the view from below must satisfy the highest visual requirements, we recommend the BRUCHA panel roof – DP with sheet metal interior shell.

### INSULATION CORE

- **nonhalogen** PIR/polyurethane rigid foam, approx. 96 % closed cells, continuously foamed
- absolutely no chlorofluorocarbons or halogenated chlorofluorocarbons – pentane foam process
- low thermal conductivity
- securely attached to the steel sheet
- density approx. 40 kg/m<sup>3</sup>



### STANDARD COLORS

in accordance with BASIC color range, identical to BRUCHA panel roof DP

### PANEL CONNECTION

- On the exterior by overlapping of beads, whereby the unfoamed sheet metal part of a panel is laid on the corresponding counterpart of the following panel (including SEALS!).
- capillary break (see drawing)

- for agricultural structures
- as protection against the formation of condensation
- at least 15 mm insulation
- reasonably priced alternative to BRUCHA panel PIR+/iQTec roof - DP