

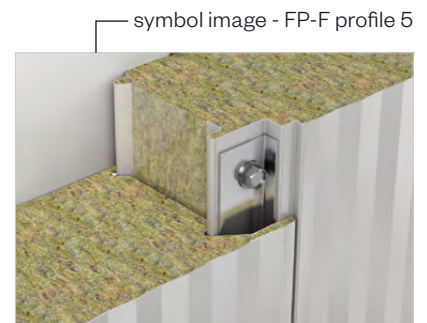
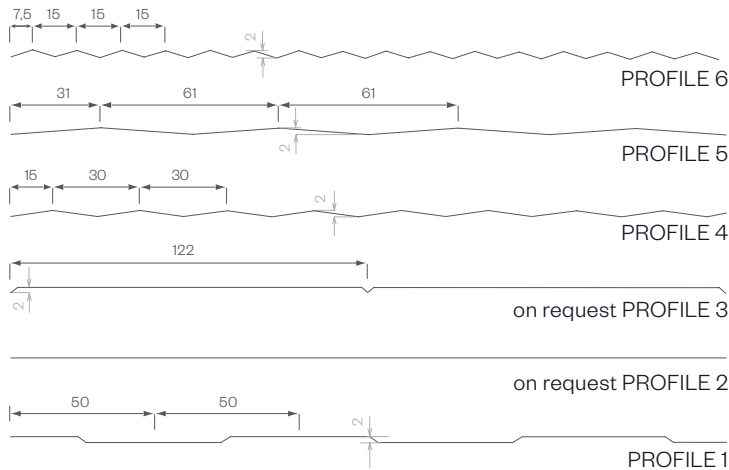
BRUCHA panel FP-F

facade concealed fastened

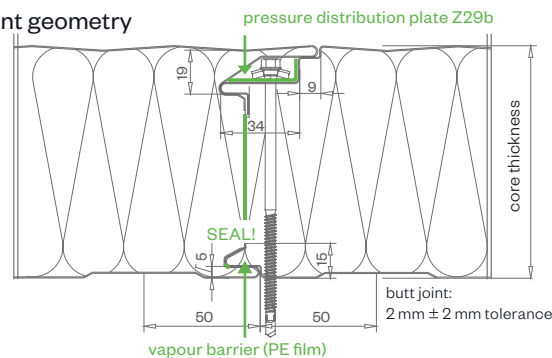


fire protection

exterior PROFILE options - close-up



DETAIL/joint geometry



PANEL TYPE	FP-F 60	FP-F 80	FP-F 100	FP-F 120	FP-F 140	FP-F 150	FP-F 160	FP-F 180	FP-F 200	FP-F 240
core thickness mm	60	80	100	120	140	150	160	180	200	240
U-value W/m ² K - EN 14509 including joint section	0.781	0.540	0.427	0.355	0.305	0.285	0.267	0.237	0.214	0.178
weight kg/m ²	16.38	18.78	21.18	23.58	25.98	27.18	28.38	30.78	33.18	37.98
fire resistance*	NPD	EI 90	EI 90	EI 120	EI 120	EI 120	EI 120	EI 120	EI 120	EI 120

*Certificates must be checked for the usage case in question (horizontal/vertical/span width etc.).

MANUFACTURING TOLERANCES

in line with EN 14509

SOUND INSULATION

32 dB (frequency dependent)

MANUFACTURING LENGTHS

max. 15.6 m (extra-long transport from 13.6 m) ATTENTION! Danger of kinking due to heavy weight in the case of long panels!

SPAN WIDTH TABLES

according SandStat. calculation

FIRE BEHAVIOR

in line with EN 13501-1, Euroclass A2s1d0, **non-combustible**

BRUCHA®



fire protection

BRUCHA panel FP-F

facade concealed fastened

DESIGN AND SURFACES Standard - coil-coated, hot-dip galvanised steel sheet

EXTERIOR

- Exposed side 25 µm polyester coating with a PVC protective film (not UV-resistant - protect from direct sunlight).
The film must be removed before installation or immediately afterwards.
- profile 1 = Standard, for other profiles see FP-F PROFILE options
- metal gauge: 0.6 mm (smaller metal gauge on request)

INTERIOR

- Exposed side 25 µm polyester coating with a PVC protective film (not UV-resistant - protect from direct sunlight).
The film must be removed before installation or immediately afterwards.
- profile 1 = standard (profile 2 and 3 on request)
- metal gauge: 0.6 mm (smaller metal gauge on request)

INSULATION CORE

- structural, web-oriented mineral fibre wool
- securely attached to the sheet steel shell
- density approx. 120 kg/m³, 140 kg/m³ available on request



construction width 1100 mm
(1000 mm special width on request)

STANDARD COLORS

in accordance with BASIC color range

PANEL CONNECTION

Tongue and groove system in which the special labyrinth profile allows the screw head to be countersunk and fully covered by the next panel – **covered, concealed mounting**. BRUCHA panel FP-F with mineral wool core can be combined with BRUCHA panel FP with PIR/polyurethane core using an adaptor panel.

TENDER TEXT

download from: bruchacom

EXTERNAL MONITORING

National and international tests and quality standards. We will send the certificates on request.

VAPOUR DIFFUSION

Determined by climatic conditions inside building. Panels must be installed vapour tight.

PANEL INSTALLATION

When working with our products, please follow our installation guidelines at bruchacom/downloads.



bruchacom

