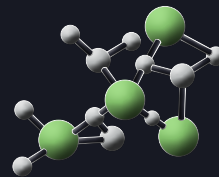


# BRUCHA panel FP-P

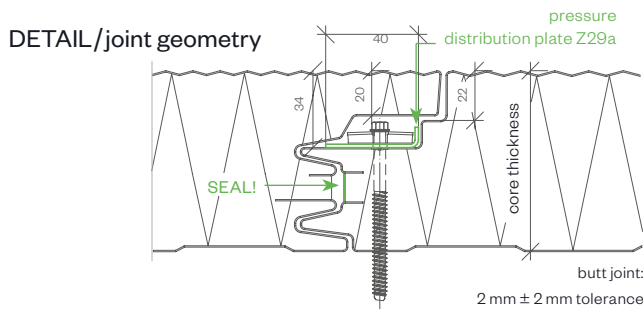
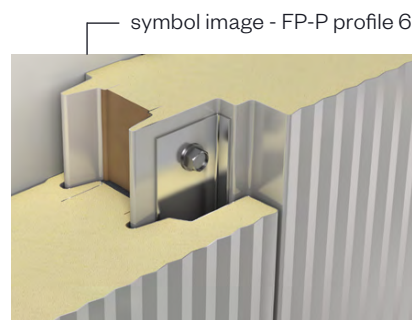
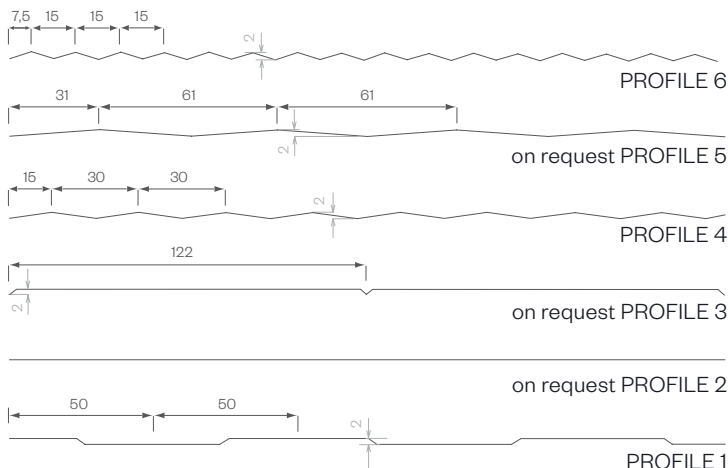
## facade PREMIUM concealed fastened

PIR+  
nonhalogen

iQTec<sup>®</sup>  
foam technology<sup>®</sup>



exterior PROFILE options - close-up



PANEL TYPE	FP-P 80	FP-P 100	FP-P 120	FP-P 140	FP-P 160	FP-P 180	FP-P 200
core thickness mm	80	100	120	140	160	180	200
PIR+ non-halogen U-value W/m <sup>2</sup> K acc. EN 14509 including joint section	0.278	0.217	0.180	0.153	0.134	0.119	0.107
iQTec <i>on request</i> U-value W/m <sup>2</sup> K acc. EN 14509 including joint section	0.239	0.187	0.155	0.132	0.115	0.102	0.092
weight kg/m <sup>2</sup>	11.75	12.55	13.35	14.15	14.95	15.75	16.55

### MANUFACTURING TOLERANCES

in line with EN 14509

### SOUND INSULATION

26 dB at 80 mm, 27 dB from 100 mm core thickness

### MANUFACTURING LENGTHS

max. 16.0 m (extra-long transport from 13.6 m)

### TEMPERATURE RESISTANCE

80 °C

### SPAN WIDTH TABLES

according SandStat. calculation

### FIRE BEHAVIOR

in line with EN 13501-1, Euroclass Bs1d0

**BRUCHA**<sup>®</sup>

# BRUCHA panel FP-P

## facade PREMIUM concealed fastened

DESIGN AND SURFACES Standard - coil-coated, hot-dip galvanised steel sheet

### EXTERIOR

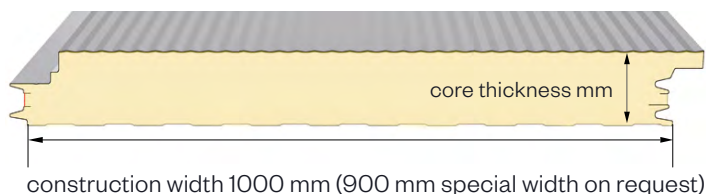
- Exposed side 25 µm polyester coating with a PVC protective film (not UV-resistant - protect from direct sunlight).  
The film must be removed before installation or immediately afterwards.
- profile 6 = Standard, for other profiles see FP-P PROFILE options
- metal gauge: 0.6 mm (smaller metal gauge on request)

### INTERIOR

- Exposed side 25 µm polyester coating with a PVC protective film (not UV-resistant - protect from direct sunlight).  
The film must be removed before installation or immediately afterwards.
- profile 1 = standard (profile 2 and 3 on request)
- metal gauge: 0.5 mm (smaller metal gauge on request)

### INSULATION CORE

- nonhalogen** PIR/polyurethane rigid foam, approx. 96 % closed cells, continuously foamed
- absolutely no chlorofluorocarbons or halogenated chlorofluorocarbons - pentane foam process
- low thermal conductivity
- securely attached to the steel sheet
- density approx. 40 kg/m<sup>3</sup>



### STANDARD COLORS

in accordance with BASIC color range

### PANEL CONNECTION

**Double tongue and groove system** in which the special labyrinth profile allows the screw head to be countersunk and fully covered by the next panel – **covered, concealed fastened**. The integrated seals guarantee maximum wind proofing. The panels interlink precisely with no thermal bridge. The PREMIUM FP-P facade panel offers outstanding structural characteristics, as well as enabling even greater span widths through the use of the pressure distribution plate.

### TENDER TEXT

download from: [brucha.com](http://brucha.com)

### EXTERNAL MONITORING

National and international tests and quality standards. We will send the certificates on request.



[brucha.com](http://brucha.com)

