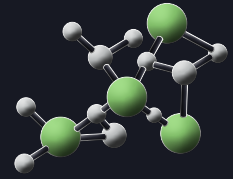


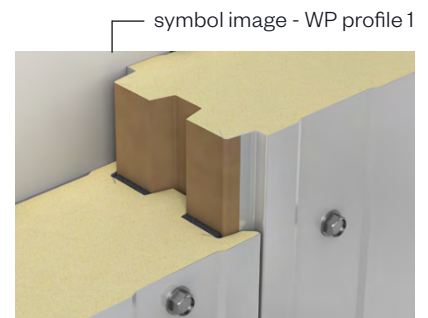
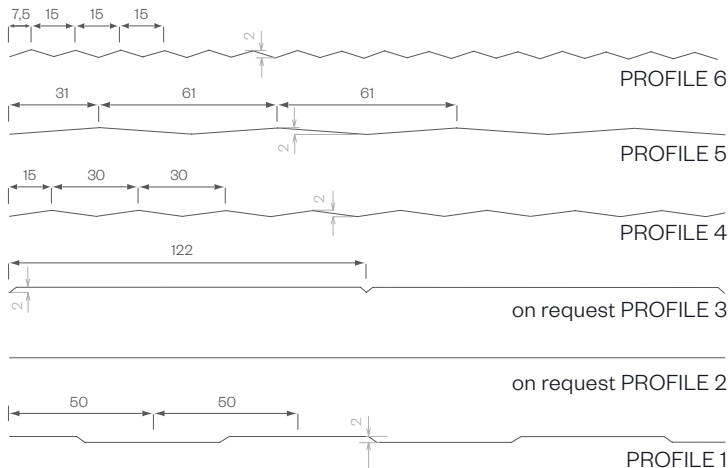
wall exposed fastened

PIR+
nonhalogen

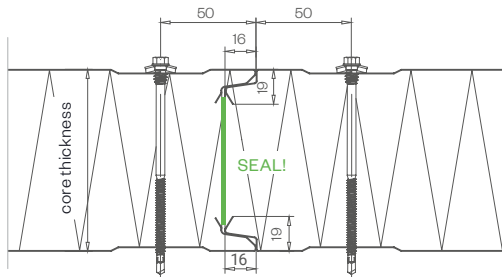
iQTec
foam technology®



exterior PROFILE options - close-up

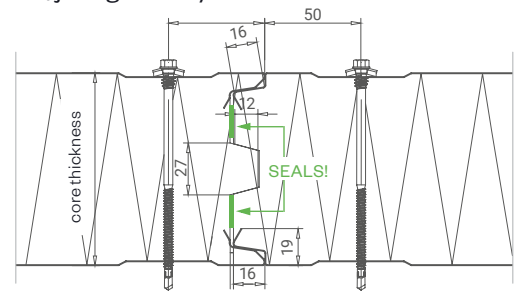


DETAIL/joint geometry up to 80 mm core thickness



butt joint:
2 mm \pm 2 mm tolerance

DETAIL/joint geometry from 100 mm core thickness



PANEL TYPE	WP 40	WP 50	WP 60	WP 80	WP 100	WP 120	WP 140	WP 150*	WP 160	WP 170	WP 180*	WP 200	WP 220*	WP 250*
core thickness mm	40	50	60	80	100	120	140	150	160	170	180	200	220	250
PIR+ non-halogen U-value W/m²K acc. EN 14509 including joint section	0.552	0.435	0.355	0.263	0.210	0.175	0.150	0.140	0.131	0.124	0.117	0.105	0.095	0.084
iQTec on request U-value W/m²K acc. EN 14509 including joint section	0.479	0.377	0.307	0.227	0.181	0.151	0.129	0.120	0.113	0.106	0.100	0.090	0.082	0.072
weight kg/m²	10.45	10.85	11.25	12.05	12.85	13.65	14.45	14.85	15.25	15.65	16.05	16.85	17.65	18.75

**on request, from 500 m² (180 from 300 m²). max. production length 16 m*

MANUFACTURING TOLERANCES

in line with EN 14509

SOUND INSULATION

26 dB at 60/80 mm, 27 dB from 100 mm core thickness

MANUFACTURING LENGTHS

max. 18.4 m (extra-long transport from 13.6 m)

TEMPERATURE RESISTANCE

80 °C

SPAN WIDTH TABLES

according SandStat. calculation

FIRE BEHAVIOR

in line with EN 13501-1, Euroclass Bs1d0

BRUCHA®

BRUCHA panel WP

wall exposed fastened

DESIGN AND SURFACES Standard - coil-coated, hot-dip galvanised steel sheet
food handling areas – test seal for clean room suitability

EXTERIOR

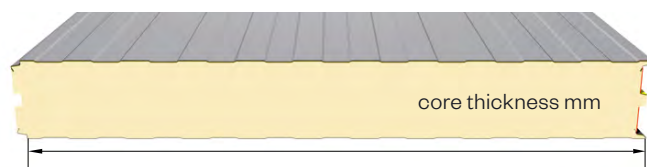
- Exposed side 25 µm polyester coating with a PVC protective film (not UV-resistant - protect from direct sunlight).
The film must be removed before installation or immediately afterwards.
- profile 1 = Standard, for other profiles see WP PROFILE options
- metal gauge: 0.6 mm (smaller metal gauge on request)

INTERIOR

- Exposed side 25 µm polyester coating with a PVC protective film (not UV-resistant - protect from direct sunlight).
The film must be removed before installation or immediately afterwards.
- profile 1 = standard (profile 2 and 3 on request)
- metal gauge: 0.5 mm (smaller metal gauge on request)

INSULATION CORE

- nonhalogen** PIR/polyurethane rigid foam, approx. 96 % closed cells, continuously foamed
- absolutely no chlorofluorocarbons or halogenated chlorofluorocarbons – pentane foam process
- low thermal conductivity
- securely attached to the steel sheet
- density approx. 40 kg/m³



construction width 1100 mm (1000 mm special width on request)

STANDARD COLORS

in accordance with BASIC color range

PANEL CONNECTION

Tongue and groove system and from 100 mm thickness with labyrinth system.
The exterior and interior sheet steel covers are not connected to each other.
The integrated seal ensures optimum wind proofing. The panels interlink precisely with no thermal bridge.
BRUCHA panel WP with polyurethane core can be combined with BRUCHA panel WP-F with mineral wool core using an adaptor panel.

TENDER TEXT

download from: brucha.com

EXTERNAL MONITORING

National and international tests and quality standards. We will send the certificates on request.



brucha.com

