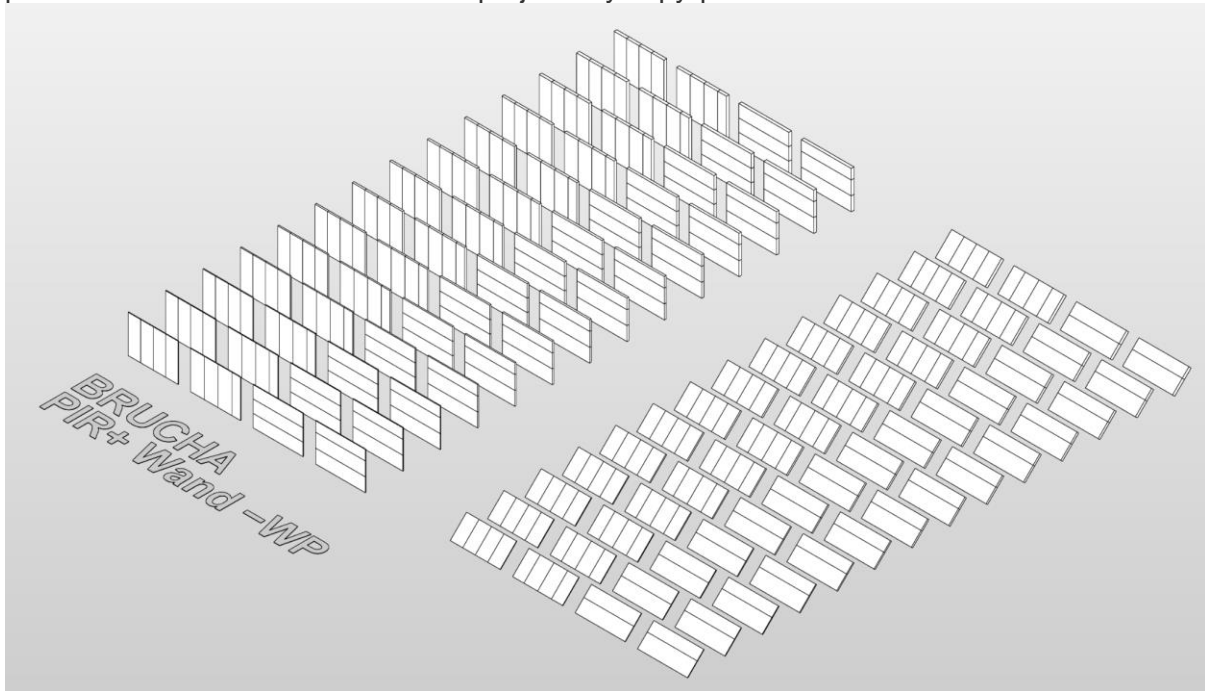


A REVIT component catalogue is available for planning with BRUCHA panels. It is created in REVIT 2020, but can also be used in newer Revit versions without any problems. The panels can be transferred to current projects by copy-paste.



A separate Revit file is available for each panel type:

- > BRUCHA panel DP-F
- > BRUCHA panel FP-F
- > BRUCHA panel WP-A
- > BRUCHA panel WP-F
- > BRUCHA panel FP
- > BRUCHA panel FP-P
- > BRUCHA panel FP-P-S
- > BRUCHA panel WP
- > BRUCHA panel DP

### Use of Facades and roofs

For facade and wall panels are different curtain walls available.



They are named after the panel type and its thickness. Subsequently, panel width and orientation are indicated.

For roofs and ceilings, the components are available in the form of roofs and the sub-type "sloped glazing".



### Characteristic values

All characteristic values are stored in the type properties.

Identity Data	
Type Image	
Keynote	
Model	Brandschutz Dach – DP-F
Manufacturer	Brucha GmbH
Type Comments	
URL	<a href="https://www.brucha.com/produkte/paneele/bruchapaneel-dp-f">https://www.brucha.com/produkte/paneele/bruchapaneel-dp-f</a>
Description	Bandbeschichtete, feuerverzinkte Feinbleche
Assembly Description	
Assembly Code	
Type Mark	
Cost	
Brandverhalten / Fire Behaviour (EN 13501-1)	A2s1d0
Gewicht / Weight (kg/m <sup>2</sup> )	20,90 kg/m <sup>2</sup>
Schallschutz / Sound Insulation	32 dB
U-Wert / Heat Transfer Coefficient (EN 14509)	0,5000
Feuerwiderstand / Fire Resistance	REI 90
Description	Coil-coated, hot-dip galvanised steel sheet

Click on "... " in the URL field to open the website of the corresponding panel

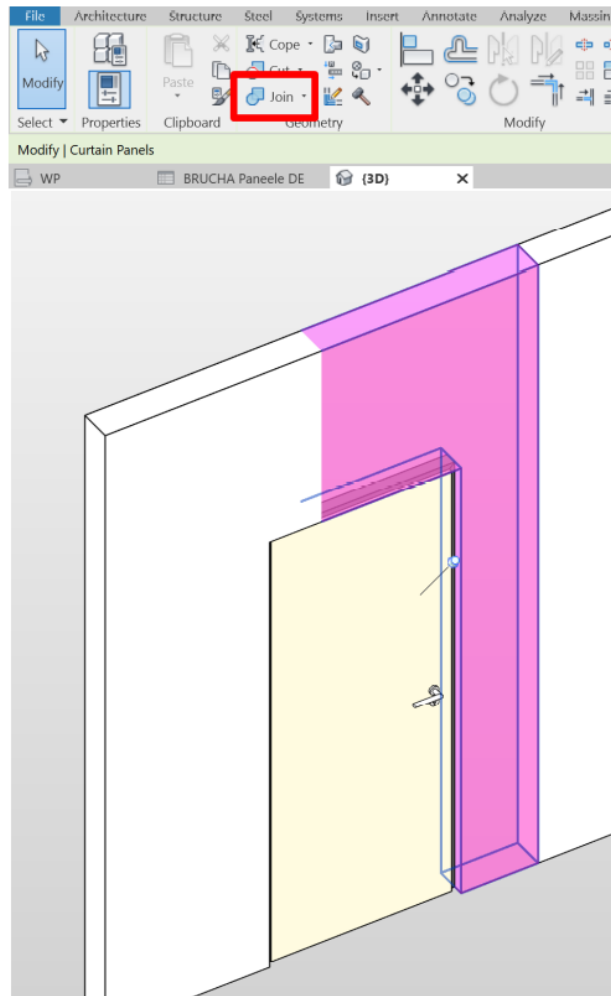
### Schedules

2 schedules (German and English) are available for calculations. They can be transferred to current projects by copy-paste.

BRUCHA Paneele										BRUCHA
A	B	C	D	E	F	G	H	I	J	K
Anzahl	Typ	Breite Paneel	Länge Paneel	Fläche	U-Wert	Brandverhalten	Schallschutz	Gewicht (kg/m <sup>2</sup> )	Gewicht / Element	Herstellerinformation URL
WP 40										
1	WP 40	700 mm	3.000 mm	2,10 m <sup>2</sup>	0,5300	Bs1d0	-	10,90 kg/m <sup>2</sup>	22,89 kg	<a href="https://www.brucha.com/produkte/paneele/bruchapaneel-dp-f">https://www.brucha.com/produkte/paneele/bruchapaneel-dp-f</a>
1	WP 40	800 mm	4.000 mm	3,20 m <sup>2</sup>	0,5300	Bs1d0	-	10,90 kg/m <sup>2</sup>	34,88 kg	<a href="https://www.brucha.com/produkte/paneele/bruchapaneel-dp-f">https://www.brucha.com/produkte/paneele/bruchapaneel-dp-f</a>
4	WP 40	1.000 mm	3.000 mm	12,00 m <sup>2</sup>	0,5300	Bs1d0	-	10,90 kg/m <sup>2</sup>	130,80 kg	<a href="https://www.brucha.com/produkte/paneele/bruchapaneel-dp-f">https://www.brucha.com/produkte/paneele/bruchapaneel-dp-f</a>
3	WP 40	1.000 mm	4.000 mm	12,00 m <sup>2</sup>	0,5300	Bs1d0	-	10,90 kg/m <sup>2</sup>	130,80 kg	<a href="https://www.brucha.com/produkte/paneele/bruchapaneel-dp-f">https://www.brucha.com/produkte/paneele/bruchapaneel-dp-f</a>
3	WP 40	1.100 mm	3.000 mm	9,90 m <sup>2</sup>	0,5300	Bs1d0	-	10,90 kg/m <sup>2</sup>	107,91 kg	<a href="https://www.brucha.com/produkte/paneele/bruchapaneel-dp-f">https://www.brucha.com/produkte/paneele/bruchapaneel-dp-f</a>
2	WP 40	1.100 mm	4.000 mm	8,80 m <sup>2</sup>	0,5300	Bs1d0	-	10,90 kg/m <sup>2</sup>	95,92 kg	<a href="https://www.brucha.com/produkte/paneele/bruchapaneel-dp-f">https://www.brucha.com/produkte/paneele/bruchapaneel-dp-f</a>
14				48,00 m <sup>2</sup>					523,20 kg	

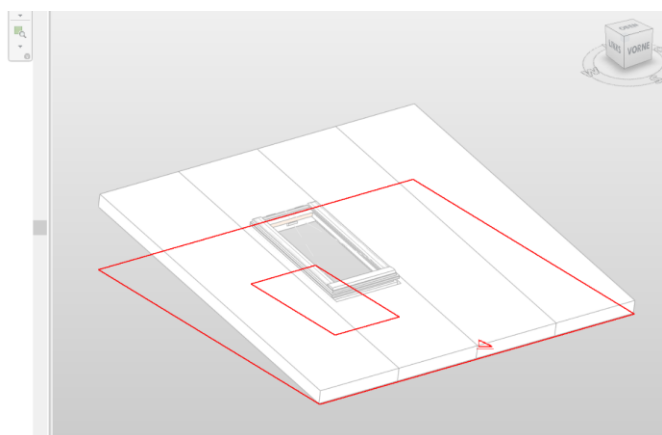
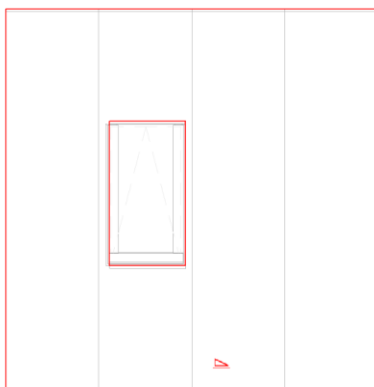
## Placement of openings and doors in walls and facades

Doors and windows can be placed in the panels as usual. When placing over several panels, the panels must be joined together with "Connect". Afterwards, the panels do not have a separating edge, but they are still calculated correctly.



## Placement of openings in roofs and ceilings

In Revit, skylights, dome lights and similar components do not create an opening in the panels of the type "roof glazing". However, the opening can be created by editing the footprint.



## Colours and materials

Wall and façade panels get their appearance from the material that is stored in the wall types.

Family:	Basic Wall				
Type:	WP 200				
Total thickness:	20,000 cm			Sample Height:	275,000 cm
Resistance (R):	0,0000 (m <sup>2</sup> ·K)/W				
Thermal Mass:	0,00 kJ/K				

Layers					
EXTERIOR SIDE					
	Function	Material	Thickness	Wraps	Structural Material
1	<b>Core Boundary</b>	<b>Layers Above Wrap</b>	<b>0,000 cm</b>		
2	Thermal/Air Layer [3]	BRUCHA PU-Paneel Profil 2 RAL9010	20,000 cm	<input type="checkbox"/>	<input type="checkbox"/>
3	<b>Core Boundary</b>	<b>Layers Below Wrap</b>	<b>0,000 cm</b>		

For roofs and ceilings, the material is stored in the corresponding system elements.

Type Properties

Family: Systemelement  
Type: WP 160

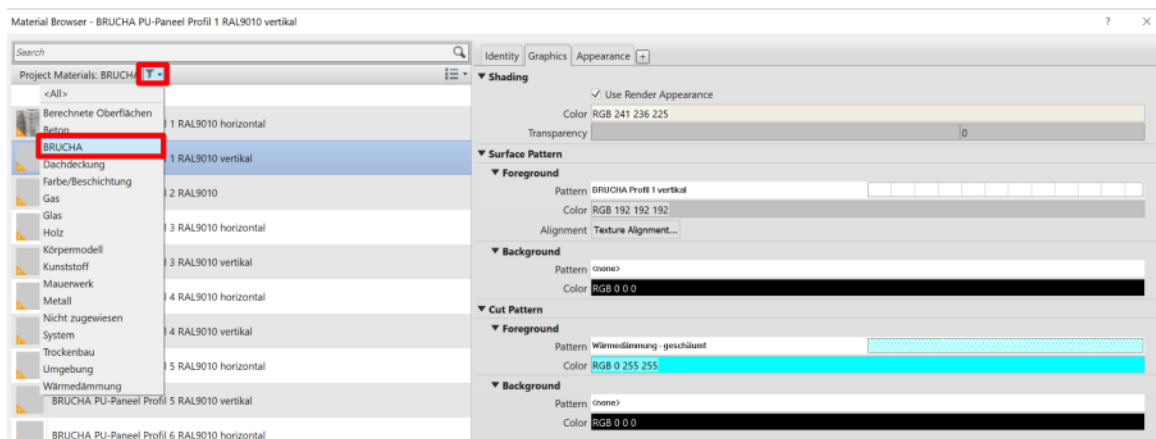
Load... Duplicate... Rename...

Type Parameters

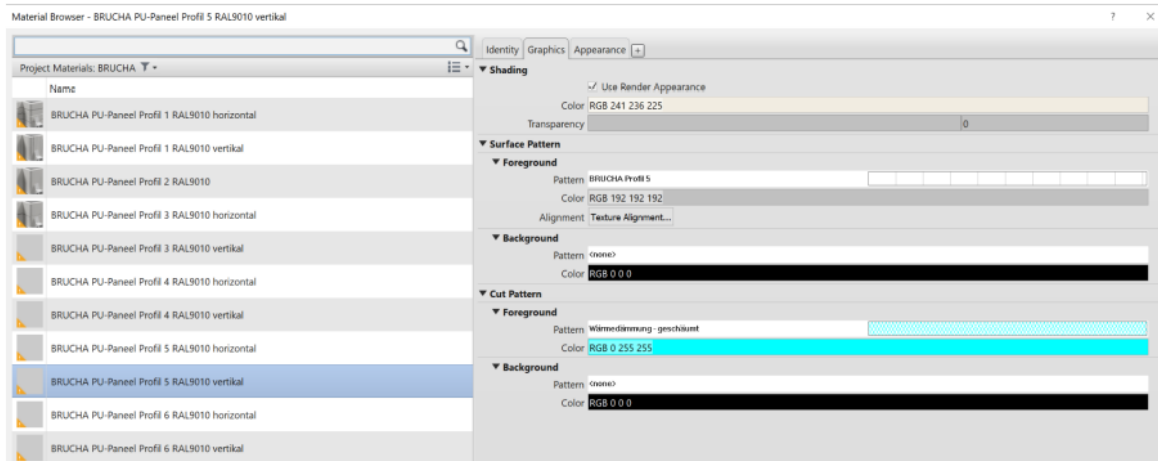
Parameter	Value
<b>Constraints</b>	
Offset	-8,000 cm
<b>Construction</b>	
Construction Type	
<b>Materials and Finishes</b>	
Finish	
Material	BRUCHA PU-Paneel Profil 2 RAL9010
Innen Farbe	
Innen Beschichtung	
Aussen Profil	
Aussen Farbe	
Aussen Beschichtung	
Innen Profil	
<b>Dimensions</b>	
Thickness	16,000 cm
<b>Analytical Properties</b>	

## Editing the materials

BRUCHA materials can be filtered in the Revit material library.



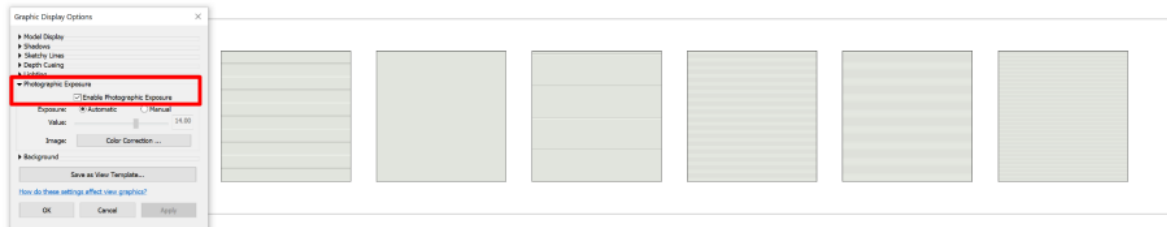
All profiles are stored for the colour RAL 9010.



To change the RAL colour, first duplicate the material, then duplicate the so-called material asset and set the appropriate colour. A list of the RAL colours with their RGB and web values can be found for example at <https://www.visual-graphics.de/de/service/ral-classic-farbtabelle/>

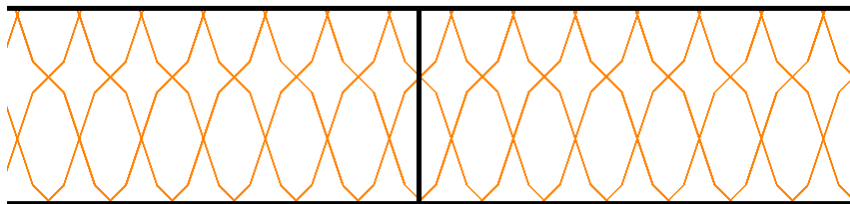
### Representation of the RAL-colours

A better colour representation can be achieved with "photographic Exposure" in the graphic display options.



### Details and joints

The detailing of the panels is deliberately kept abstract: Element joints are represented as one surface, the panel structure is single-layered and does without the sheet metal on the outside and inside.



This ensures the performance of large models and suitable plan graphics.

Details on the panel joints can be found on all product data sheets.

