



PANELS
THAT
CONNECT.

facade wall

PIR+ / iQTec
nonhalogen / foam technology®

fire protection



ENVIRONMENTALLY CERTIFIED PRODUCTION

We all rely on the efficient use of energy.

This requires work processes to be as sustainable as possible.



BRUCHA

always
one step ahead

We have always been a pioneer in the implementation of efficient energy-saving measures. Numerous actions and projects have been realized in recent years to significantly improve our energy consumption. The implementation of further measures leads to continuous improvements of our production processes, our products and most importantly to new product developments.

Bringing proof that we are a responsible manufacturer, we are certified according to the environmental management system **ISO 14001:2015**. All BRUCHA panels with PIR+ and mineral wool core are certified according the standard for responsible sourcing **BES 6001** - assessment score - **Very Good**.



PANELS
THAT
CONNECT.

BRUCHA panel

facade wall

contents

page

PIR rigid foam

PIR+ nonhalogen/ iQTec® foam technology	4
Facade Premium FP-P concealed fastened	6
Facade Premium Select FP-P-S concealed fastened	8
Facade FP concealed fastened	10
Glass Sandwich Panel - GSP	12
Wall WP exposed fastened	14

FIRE PROTECTION/mineral wool core

Facade FP-F concealed fastened	18
Wall WP-F exposed fastened	20
Acoustic WP-A exposed fastened	22



assessment score

Very Good

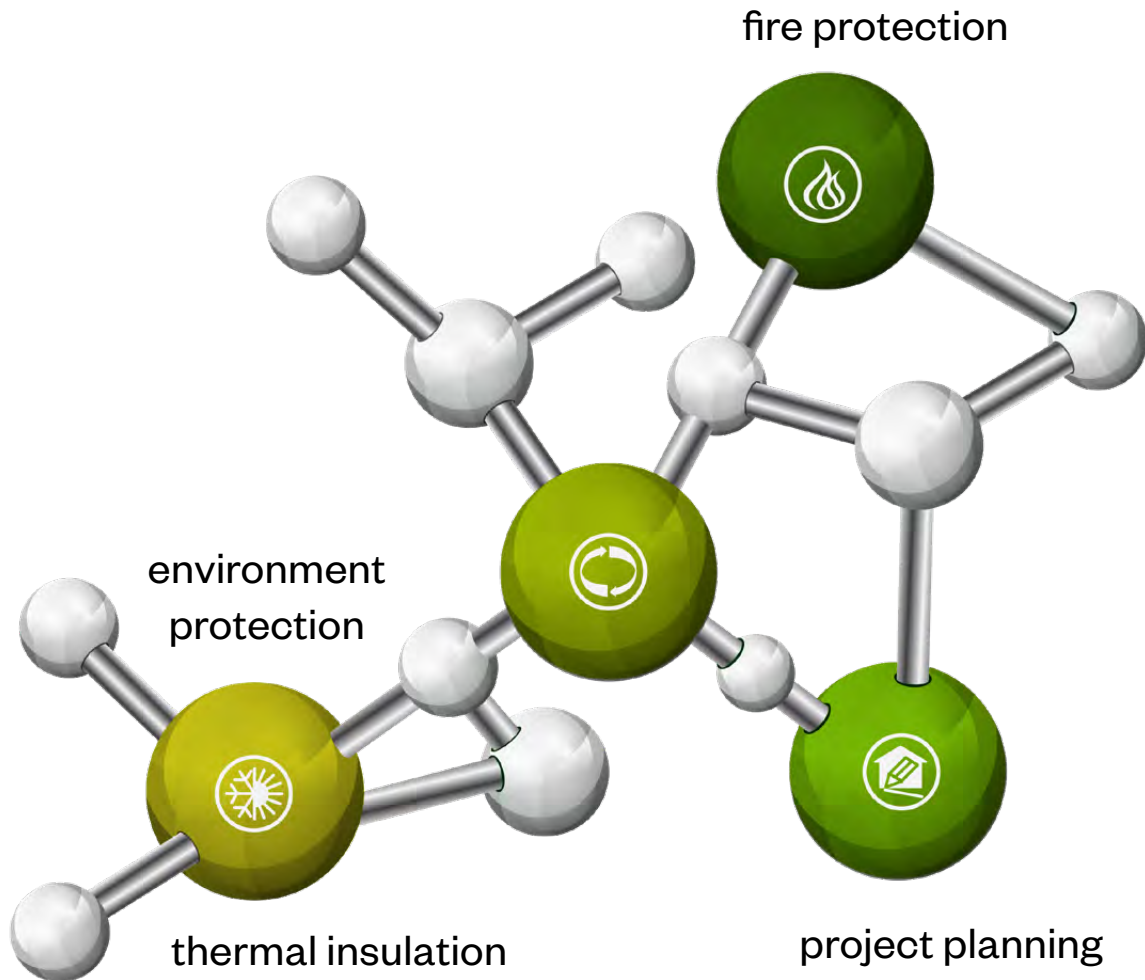


PIR+
nonhalogen

iQTec
foam technology®

BRUCHA panel

insulation core



fire behavior
acc. EN 13501-1

Euroclass Bs1d0
flame protection

excellent
energy efficiency

low
thermal conductivity

VOC emission
class A+

outstanding
LCA

low
operating weight

high stability,
thin construction,
floor space gain

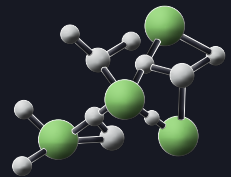
BRUCHA®

PANELS
THAT
CONNECT.



PIR+
nonhalogen

iQTec
foam technology®



BRUCHA panel | facade
wall



BRUCHA panel FP-P

facade PREMIUM concealed fastened

DESIGN AND SURFACES Standard - coil-coated, hot-dip galvanised steel sheet

EXTERIOR

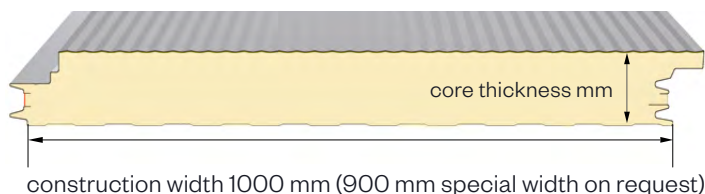
- Exposed side 25 µm polyester coating with a PVC protective film (not UV-resistant - protect from direct sunlight).
The film must be removed before installation or immediately afterwards.
- profile 6 = Standard, for other profiles see FP-P PROFILE options
- metal gauge: 0.6 mm (smaller metal gauge on request)

INTERIOR

- Exposed side 25 µm polyester coating with a PVC protective film (not UV-resistant - protect from direct sunlight).
The film must be removed before installation or immediately afterwards.
- profile 1 = standard (profile 2 and 3 on request)
- metal gauge: 0.5 mm (smaller metal gauge on request)

INSULATION CORE

- **nonhalogen** PIR/polyurethane rigid foam, approx. 96 % closed cells, continuously foamed
- absolutely no chlorofluorocarbons or halogenated chlorofluorocarbons - pentane foam process
- low thermal conductivity
- securely attached to the steel sheet
- density approx. 40 kg/m³



STANDARD COLORS

in accordance with BASIC color range

PANEL CONNECTION

Double tongue and groove system in which the special labyrinth profile allows the screw head to be countersunk and fully covered by the next panel – **covered, concealed fastened**. The integrated seals guarantee maximum wind proofing. The panels interlink precisely with no thermal bridge. The PREMIUM FP-P facade panel offers outstanding structural characteristics, as well as enabling even greater span widths through the use of the pressure distribution plate.

TENDER TEXT

download from: brucha.com

EXTERNAL MONITORING

National and international tests and quality standards. We will send the certificates on request.

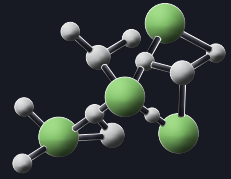


BRUCHA panel FP-P

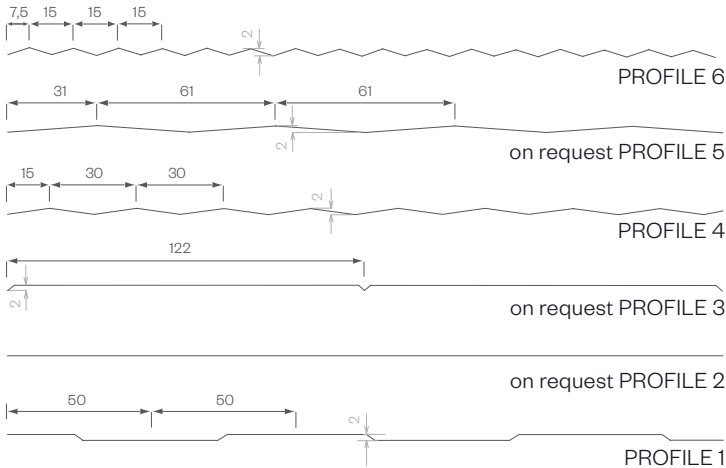
facade PREMIUM concealed fastened

PIR+
nonhalogen

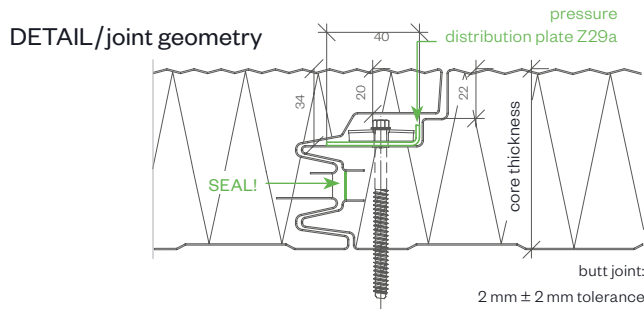
iQTec[®]
foam technology[®]



exterior PROFILE options - close-up



symbol image - FP-P profile 6



PANEL TYPE	FP-P 80	FP-P 100	FP-P 120	FP-P 140	FP-P 160	FP-P 180	FP-P 200
core thickness mm	80	100	120	140	160	180	200
PIR+ non-halogen U-value W/m ² K acc. EN 14509 including joint section	0.278	0.217	0.180	0.153	0.134	0.119	0.107
iQTec on request U-value W/m ² K acc. EN 14509 including joint section	0.239	0.187	0.155	0.132	0.115	0.102	0.092
weight kg/m ²	11.75	12.55	13.35	14.15	14.95	15.75	16.55

MANUFACTURING TOLERANCES

in line with EN 14509

SOUND INSULATION

26 dB at 80 mm, 27 dB from 100 mm core thickness

MANUFACTURING LENGTHS

max. 16.0 m (extra-long transport from 13.6 m)

TEMPERATURE RESISTANCE

80 °C

SPAN WIDTH TABLES

according SandStat. calculation

FIRE BEHAVIOR

in line with EN 13501-1, Euroclass Bs1d0

BRUCHA[®]

BRUCHA panel FP-P-S

facade PREMIUM Select concealed fastened

DESIGN AND SURFACES Standard - coil-coated, hot-dip galvanised steel sheet

EXTERIOR

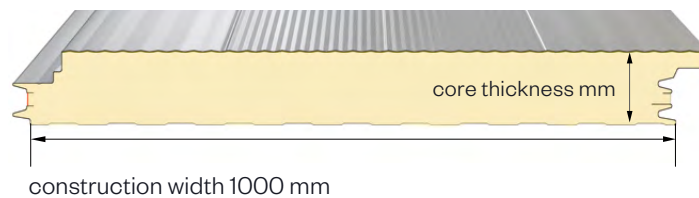
- Exposed side 25 µm polyester coating with a PVC protective film (not UV-resistant - protect from direct sunlight).
The film must be removed before installation or immediately afterwards.
- profiles 2, 5 and 6, making a total of 19 different profile combination options
- metal gauge: 0.6 mm (smaller metal gauge on request)

INTERIOR

- Exposed side 25 µm polyester coating with a PVC protective film (not UV-resistant - protect from direct sunlight).
The film must be removed before installation or immediately afterwards.
- profile 1 = standard (profile 2 and 3 on request)
- metal gauge: 0.5 mm (smaller metal gauge on request)

INSULATION CORE

- **nonhalogen** PIR/polyurethane rigid foam, approx. 96 % closed cells, continuously foamed
- absolutely no chlorofluorocarbons or halogenated chlorofluorocarbons – pentane foam process
- low thermal conductivity
- securely attached to the steel sheet
- density approx. 40 kg/m³



STANDARD COLORS

in accordance with BASIC color range

PANEL CONNECTION

Double tongue and groove system in which the special labyrinth profile allows the screw head to be countersunk and fully covered by the next panel – **covered, concealed fastened**. The integrated seals guarantee maximum wind proofing.

The panels interlink precisely with no thermal bridge. The PREMIUM FP-P-S facade panel offers outstanding structural characteristics, as well as enabling even greater span widths through the use of the pressure distribution plate.

TENDER TEXT

download from: brucha.com

EXTERNAL MONITORING

National and international tests and quality standards. We will send the certificates on request.

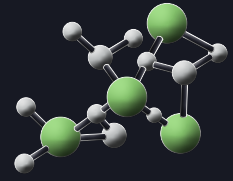


BRUCHA panel FP-P-S

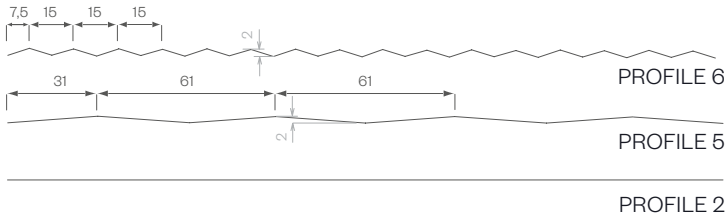
facade PREMIUM Select concealed fastened

PIR+
nonhalogen

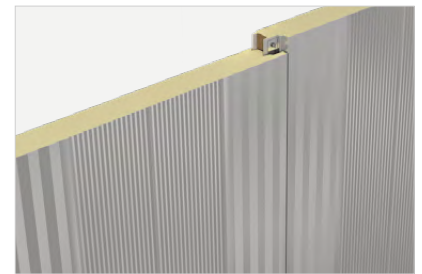
iQTec[®]
foam technology[®]



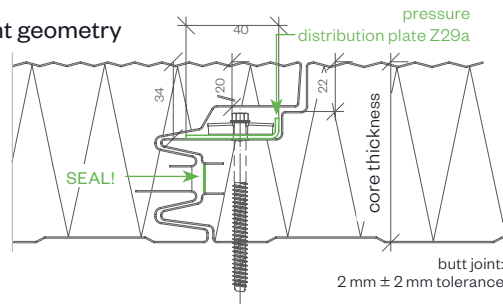
exterior PROFILE options - close-up



symbol image - FP-P-S profile 5-6-6-5



DETAIL/joint geometry



exterior PROFILE combination options

VARIANTS	1	2	3	4	5	6	7	8	9	10	11	12	13	14	15	16	17	18	19
profile pair	2			2 and 6						2 and 5						5 and 6			
<i>RIGHT</i>	2	2	2	6	2	6	6	2	2	5	2	5	5	5	5	6	6	5	6
panel orientation	2	2	6	2	6	2	6	2	5	2	5	2	5	5	6	5	5	6	6
<i>LEFT</i>	2	6	6	6	2	2	2	5	5	5	2	2	2	6	6	6	5	5	5

PANEL TYPE	FP-P 80	FP-P 100	FP-P 120	FP-P 140	FP-P 160	FP-P 180	FP-P 200
core thickness mm	80	100	120	140	160	180	200
PIR+ non-halogen U-value W/m ² K acc. EN 14509 including joint section	0.278	0.217	0.180	0.153	0.134	0.119	0.107
iQTec on request U-value W/m ² K acc. EN 14509 including joint section	0.239	0.187	0.155	0.132	0.115	0.102	0.092
weight kg/m ²	11.75	12.55	13.35	14.15	14.95	15.75	16.55

MANUFACTURING TOLERANCES

in line with EN 14509

SOUND INSULATION

26 dB at 80 mm, 27 dB from 100 mm core thickness

MANUFACTURING LENGTHS

max. 16.0 m (extra-long transport from 13.6 m)

TEMPERATURE RESISTANCE

80 °C

SPAN WIDTH TABLES

according SandStat. calculation

FIRE BEHAVIOR

in line with EN 13501-1, Euroclass Bs1d0

BRUCHA[®]

BRUCHA panel FP

facade concealed fastened

DESIGN AND SURFACES Standard - coil-coated, hot-dip galvanised steel sheet

EXTERIOR

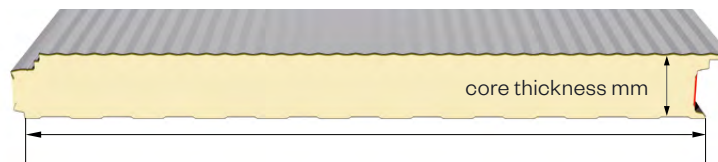
- Exposed side 25 µm polyester coating with a PVC protective film (not UV-resistant - protect from direct sunlight).
The film must be removed before installation or immediately afterwards.
- profile 5 = Standard, for other profiles see FP PROFILE options
- metal gauge: 0.6 mm (smaller metal gauge on request)

INTERIOR

- Exposed side 25 µm polyester coating with a PVC protective film (not UV-resistant - protect from direct sunlight).
The film must be removed before installation or immediately afterwards.
- profile 1 = standard (profile 2 and 3 on request)
- metal gauge: 0.5 mm (smaller metal gauge on request)

INSULATION CORE

- nonhalogen** PIR/polyurethane rigid foam, approx. 96 % closed cells, continuously foamed
- absolutely no chlorofluorocarbons or halogenated chlorofluorocarbons - pentane foam process
- low thermal conductivity
- securely attached to the steel sheet
- density approx. 40 kg/m³



construction width 1100 mm (1000 mm special width on request)

STANDARD COLORS

in accordance with BASIC color range

PANEL CONNECTION

Tongue and groove system in which the special labyrinth profile allows the screw head to be countersunk and fully covered by the next panel – **covered, concealed mounting**. The integrated seals guarantee maximum wind proofing.

The panels interlink precisely with no thermal bridge.

BRUCHA panel FP with PIR/polyurethane core can be combined with BRUCHA panel FP-F with mineral wool core using an adaptor panel.

TENDER TEXT

download from: brucha.com

EXTERNAL MONITORING

National and international tests and quality standards. We will send the certificates on request.

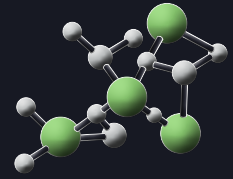


BRUCHA panel FP

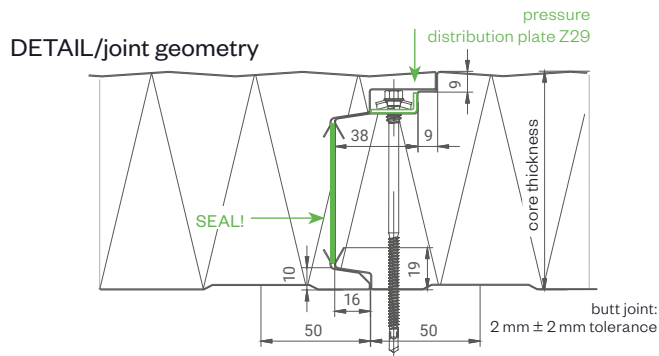
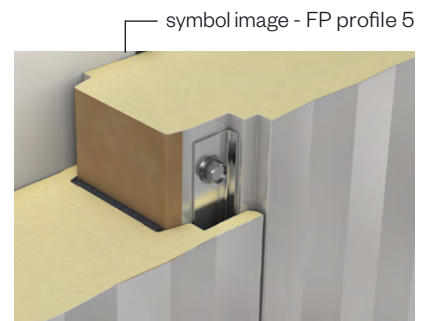
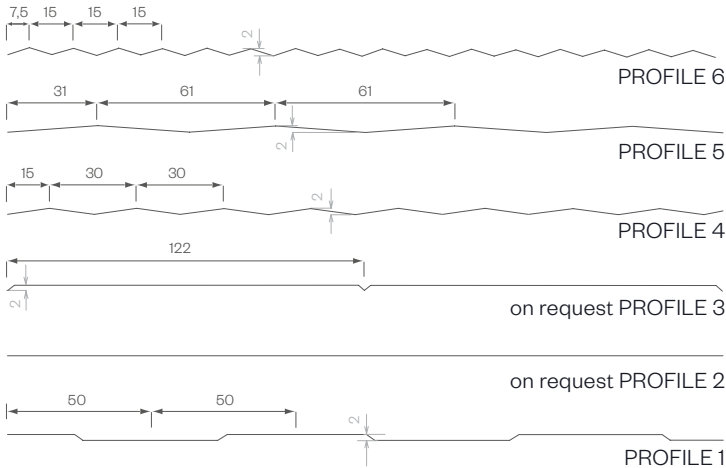
facade concealed fastened

PIR+
nonhalogen

iQTec
foam technology®



exterior PROFILE options - close-up



PANEL TYPE	FP 60	FP 80	FP 100	FP 120	FP 140	FP 150	FP 160
core thickness mm	60	80	100	120	140	150	160
PIR+ non-halogen U-value W/m²K acc. EN 14509 including joint section	0.404	0.275	0.216	0.179	0.153	0.142	0.133
iQTec on request U-value W/m²K acc. EN 14509 including joint section	0.349	0.237	0.186	0.154	0.131	0.122	0.115
weight kg/m²	11.24	12.04	12.84	13.64	14.44	14.84	15.24

MANUFACTURING TOLERANCES

in line with EN 14509

SOUND INSULATION

26 dB at 60/80 mm, 27 dB from 100 mm core thickness

MANUFACTURING LENGTHS

max. 16.0 m (extra-long transport from 13.6 m)

TEMPERATURE RESISTANCE

80 °C

SPAN WIDTH TABLES

according SandStat. calculation

FIRE BEHAVIOR

in line with EN 13501-1, Euroclass Bs1d0

BRUCHA®

BRUCHA panel GSP

Glass Sandwich Panel - facade PREMIUM

concealed fastened

DESIGN AND SURFACES Standard - coil-coated, hot-dip galvanised steel sheet

EXTERIOR

- visible side 60 µm PUR/PA-surface coating
- sheet thickness: 0.6 mm

INTERIOR

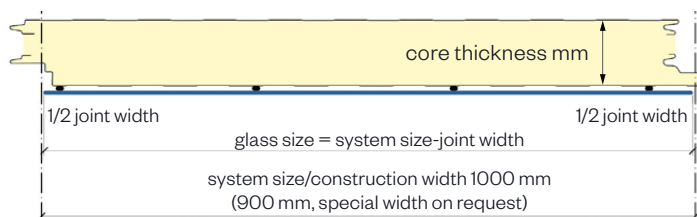
- Exposed side 25 µm polyester coating with a PVC protective film (not UV-resistant - protect from direct sunlight).
The film must be removed before installation or immediately afterwards.
- metal gauge: 0.5 mm (smaller metal gauge on request)

INSULATION CORE

- **nonhalogen** PIR/polyurethane rigid foam, approx. 96 % closed cells, continuously foamed
- absolutely no chlorofluorocarbons or halogenated chlorofluorocarbons – pentane foam process
- low thermal conductivity
- securely attached to the steel sheet
- density approx. 40 kg/m³

GSP® Glass Sandwich Panel

System description



STANDARD COLORS

interior RAL 9002 and exterior RAL 7016

PANEL CONNECTION

double tongue and groove system

STANDARD GLASS

6 mm TVG (DIN EN 1863-1) based on float glass, alternatively low-iron glass

GLASS PRINTING

ceramic-ink roller-coater printing (single color) or alternatively screen or digital printing

PRINTING COLORS

standard: traffic white (RAL 9016). light grey (RAL 7035). anthracite (RAL 7016)
all SG compatible colors possible

GLASS EDGE

KGN/KGS edges ground and chamfered

IMPERMEABILITY TO DRIVING RAIN

class R7 in line with EN 12154

AIR PERMEABILITY

class A4 in line with EN 12152

APPROVAL

GSP® is the first licensed construction product (DIBt approval Z-10.4-674) consisting of a mass-produced sandwich panel with structurally glued glass pane.



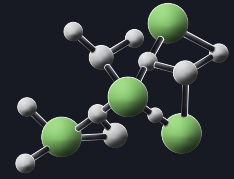
BRUCHA panel GSP

Glass Sandwich Panel - facade PREMIUM

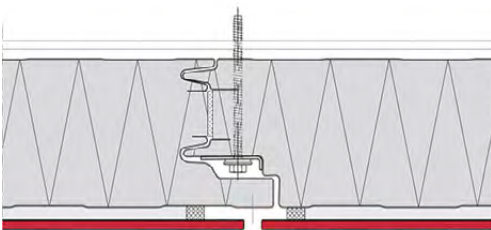
concealed fastened

PIR+
nonhalogen

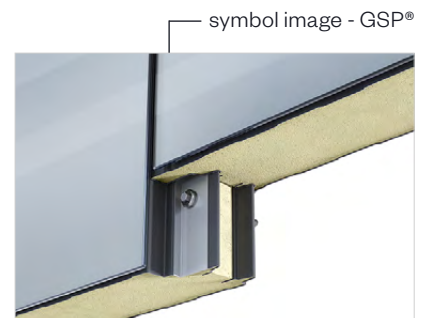
iQTec[®]
foam technology[®]



DETAIL/joint geometry
vertical installation



GSP[®] 140



BASIC PANEL TYPE	FP-P 100	FP-P 120	FP-P 140	FP-P 160	FP-P 180	FP-P 200
thickness basic panel mm	100	120	140	160	180	200
thickness GSP [®] element mm	114	134	154	174	194	214
PIR+ non-halogen U-value W/m ² K acc. EN 14509 including joint section	0.217	0.180	0.153	0.134	0.119	0.107
iQTec <i>on request</i> U-value W/m ² K acc. EN 14509 including joint section	0.187	0.155	0.132	0.115	0.102	0.092
weight GSP [®] element kg/m ²	31.00	32.00	33.00	34.00	35.00	36.00

PRODUCT PROPERTIES

MANUFACTURING TOLERANCES

in line with EN 14509

SOUND INSULATION

all thicknesses approx. 33 dB

MANUFACTURING LENGTHS

max. 16.0 m (extra-long transport from 13.6 m)

TEMPERATURE RESISTANCE

-20° C to +80° C

SPAN WIDTH

calculated in line with GSP[®] product folder

FIRE BEHAVIOR

in line with EN 13501-1, Euroclass Bs1d0

BRUCHA[®]

BRUCHA panel WP

wall exposed fastened

DESIGN AND SURFACES Standard - coil-coated, hot-dip galvanised steel sheet
food handling areas – test seal for clean room suitability

EXTERIOR

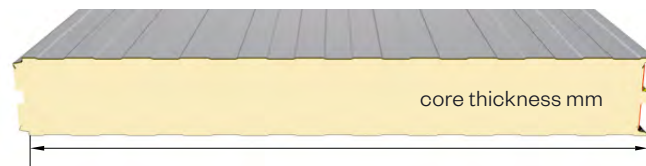
- Exposed side 25 µm polyester coating with a PVC protective film (not UV-resistant - protect from direct sunlight).
The film must be removed before installation or immediately afterwards.
- profile 1 = Standard, for other profiles see WP PROFILE options
- metal gauge: 0.6 mm (smaller metal gauge on request)

INTERIOR

- Exposed side 25 µm polyester coating with a PVC protective film (not UV-resistant - protect from direct sunlight).
The film must be removed before installation or immediately afterwards.
- profile 1 = standard (profile 2 and 3 on request)
- metal gauge: 0.5 mm (smaller metal gauge on request)

INSULATION CORE

- nonhalogen** PIR/polyurethane rigid foam, approx. 96 % closed cells, continuously foamed
- absolutely no chlorofluorocarbons or halogenated chlorofluorocarbons – pentane foam process
- low thermal conductivity
- securely attached to the steel sheet
- density approx. 40 kg/m³



construction width 1100 mm (1000 mm special width on request)

STANDARD COLORS

in accordance with BASIC color range

PANEL CONNECTION

Tongue and groove system and from 100 mm thickness with labyrinth system.
The exterior and interior sheet steel covers are not connected to each other.
The integrated seal ensures optimum wind proofing. The panels interlink precisely with no thermal bridge.
BRUCHA panel WP with polyurethane core can be combined with BRUCHA panel WP-F with mineral wool core using an adaptor panel.

TENDER TEXT

download from: bruchacom

EXTERNAL MONITORING

National and international tests and quality standards. We will send the certificates on request.

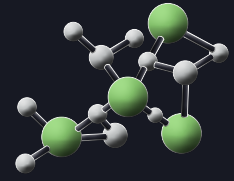


BRUCHA panel WP

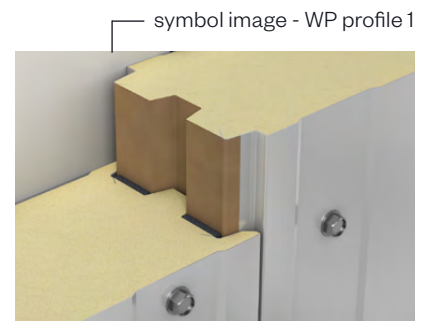
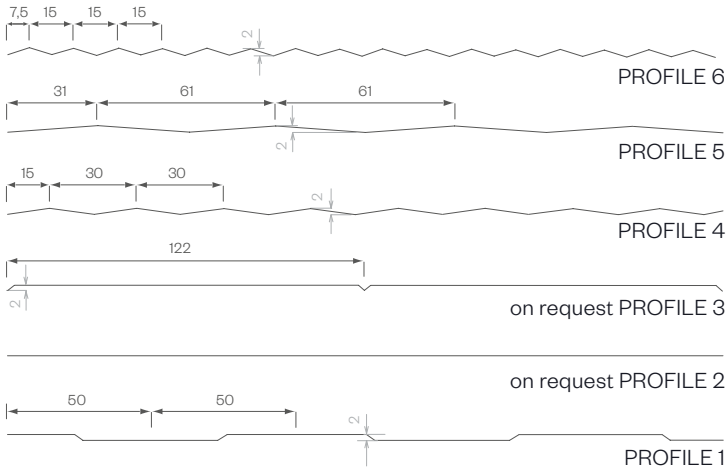
wall exposed fastened

PIR+
nonhalogen

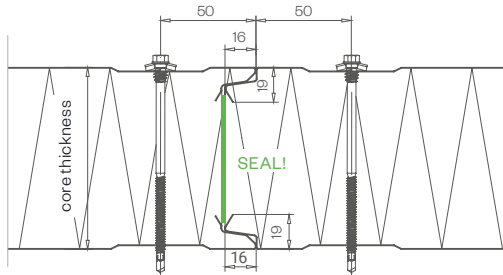
iQTec[®]
foam technology[®]



exterior PROFILE options - close-up

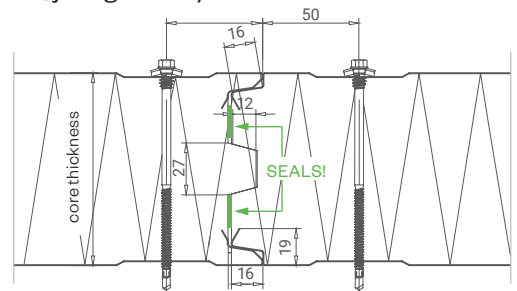


DETAIL/joint geometry up to 80 mm core thickness



butt joint:
2 mm ± 2 mm tolerance

DETAIL/joint geometry from 100 mm core thickness



PANEL TYPE	WP 40	WP 50	WP 60	WP 80	WP 100	WP 120	WP 140	WP 150*	WP 160	WP 170	WP 180*	WP 200	WP 220*	WP 250*
core thickness mm	40	50	60	80	100	120	140	150	160	170	180	200	220	250
PIR+ non-halogen U-value W/m ² K acc. EN 14509 including joint section	0.552	0.435	0.355	0.263	0.210	0.175	0.150	0.140	0.131	0.124	0.117	0.105	0.095	0.084
iQTec <i>on request</i> U-value W/m ² K acc. EN 14509 including joint section	0.479	0.377	0.307	0.227	0.181	0.151	0.129	0.120	0.113	0.106	0.100	0.090	0.082	0.072
weight kg/m ²	10.45	10.85	11.25	12.05	12.85	13.65	14.45	14.85	15.25	15.65	16.05	16.85	17.65	18.75

*on request, from 500 m² (180 from 300 m²). max. production length 16 m

MANUFACTURING TOLERANCES

in line with EN 14509

SOUND INSULATION

26 dB at 60/80 mm, 27 dB from 100 mm core thickness

MANUFACTURING LENGTHS

max. 18.4 m (extra-long transport from 13.6 m)

TEMPERATURE RESISTANCE

80 °C

SPAN WIDTH TABLES

according SandStat. calculation

FIRE BEHAVIOR

in line with EN 13501-1, Euroclass Bs1d0

BRUCHA[®]



BRUCHA®

PANELS
THAT
CONNECT.



fire protection

BRUCHA panel | facade wall





fire protection

BRUCHA panel FP-F

facade concealed fastened

DESIGN AND SURFACES Standard - coil-coated, hot-dip galvanised steel sheet

EXTERIOR

- Exposed side 25 µm polyester coating with a PVC protective film (not UV-resistant - protect from direct sunlight).
The film must be removed before installation or immediately afterwards.
- profile 1 = Standard, for other profiles see FP-F PROFILE options
- metal gauge: 0.6 mm (smaller metal gauge on request)

INTERIOR

- Exposed side 25 µm polyester coating with a PVC protective film (not UV-resistant - protect from direct sunlight).
The film must be removed before installation or immediately afterwards.
- profile 1 = standard (profile 2 and 3 on request)
- metal gauge: 0.6 mm (smaller metal gauge on request)

INSULATION CORE

- structural, web-oriented mineral fibre wool
- securely attached to the sheet steel shell
- density approx. 120 kg/m³, 140 kg/m³ available on request



construction width 1100 mm
(1000 mm special width on request)

STANDARD COLORS

in accordance with BASIC color range

PANEL CONNECTION

Tongue and groove system in which the special labyrinth profile allows the screw head to be countersunk and fully covered by the next panel – **covered, concealed mounting**. BRUCHA panel FP-F with mineral wool core can be combined with BRUCHA panel FP with PIR/polyurethane core using an adaptor panel.

TENDER TEXT

download from: bruchacom

EXTERNAL MONITORING

National and international tests and quality standards. We will send the certificates on request.

VAPOUR DIFFUSION

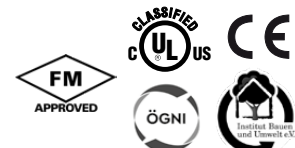
Determined by climatic conditions inside building. Panels must be installed vapour tight.

PANEL INSTALLATION

When working with our products, please follow our installation guidelines at bruchacom/downloads.



bruchacom



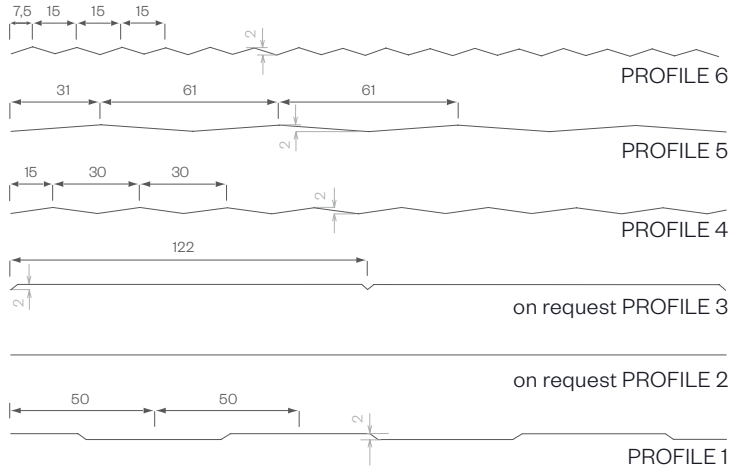
BRUCHA panel FP-F

facade concealed fastened

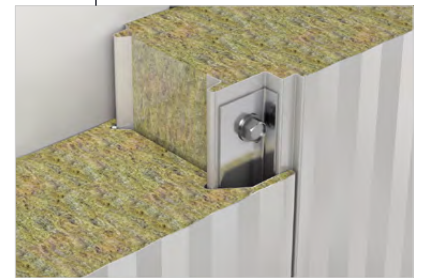


fire protection

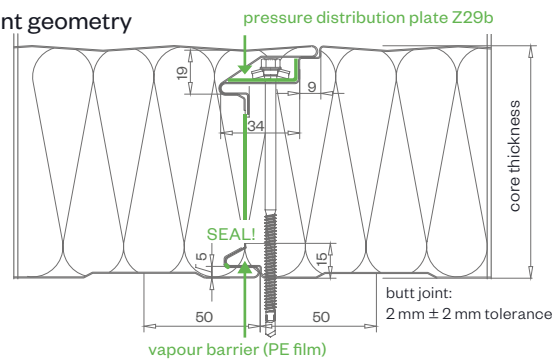
exterior PROFILE options - close-up



symbol image - FP-F profile 5



DETAIL/joint geometry



PANEL TYPE	FP-F 60	FP-F 80	FP-F 100	FP-F 120	FP-F 140	FP-F 150	FP-F 160	FP-F 180	FP-F 200	FP-F 240
core thickness mm	60	80	100	120	140	150	160	180	200	240
U-value W/m ² K - EN 14509 including joint section	0.781	0.540	0.427	0.355	0.305	0.285	0.267	0.237	0.214	0.178
weight kg/m ²	16.38	18.78	21.18	23.58	25.98	27.18	28.38	30.78	33.18	37.98
fire resistance*	NPD	EI 90	EI 90	EI 120	EI 120	EI 120	EI 120	EI 120	EI 120	EI 120

*Certificates must be checked for the usage case in question (horizontal/vertical/span width etc.).

MANUFACTURING TOLERANCES

in line with EN 14509

SOUND INSULATION

32 dB (frequency dependent)

MANUFACTURING LENGTHS

max. 15.6 m (extra-long transport from 13.6 m) ATTENTION! Danger of kinking due to heavy weight in the case of long panels!

SPAN WIDTH TABLES

according SandStat. calculation

FIRE BEHAVIOR

in line with EN 13501-1, Euroclass A2s1d0, **non-combustible**



fire protection

BRUCHA panel WP-F

wall exposed fastened

DESIGN AND SURFACES Standard - coil-coated, hot-dip galvanised steel sheet

EXTERIOR

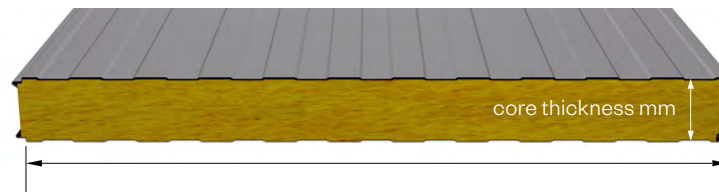
- Exposed side 25 µm polyester coating with a PVC protective film (not UV-resistant - protect from direct sunlight).
The film must be removed before installation or immediately afterwards.
- profile 1 = Standard, for other profiles see WP-F PROFILE options
- metal gauge: 0.6 mm (smaller metal gauge on request)

INTERIOR

- Exposed side 25 µm polyester coating with a PVC protective film (not UV-resistant - protect from direct sunlight).
The film must be removed before installation or immediately afterwards.
- profile 1 = standard (profile 2 and 3 on request)
- metal gauge: 0.6 mm (smaller metal gauge on request)

INSULATION CORE

- structural, web-oriented mineral fibre wool
- securely attached to the sheet steel shell
- density approx. 120 kg/m³, 140 kg/m³ available on request



construction width 1100 mm
(1000 mm special width on request)

STANDARD COLORS

in accordance with BASIC color range

PANEL CONNECTION

Tongue and groove system in which the panels interlink precisely with no thermal bridge.

TENDER TEXT

download from: bruchacom

EXTERNAL MONITORING

National and international tests and quality standards. We will send the certificates on request.

VAPOUR DIFFUSION

Determined by climatic conditions inside building. Panels must be installed vapour tight.

PANEL INSTALLATION

When working with our products, please follow our installation guidelines at bruchacom/downloads



bruchacom



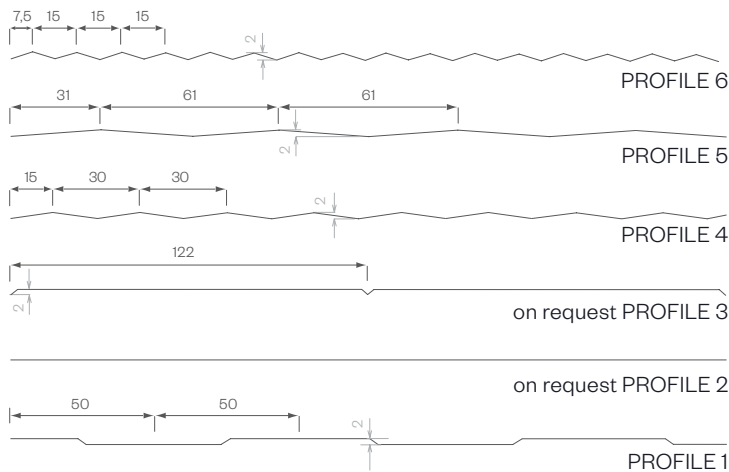
BRUCHA panel WP-F

wall exposed fastened



fire protection

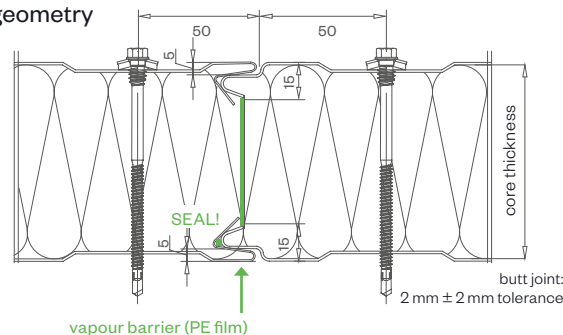
exterior PROFILE options - close-up



symbol image - WP-F profile 1



DETAIL/joint geometry



PANEL TYPE	WP-F 60	WP-F 80	WP-F 100	WP-F 120	WP-F 140	WP-F 150	WP-F 160	WP-F 180	WP-F 200	WP-F 240
core thickness mm	60	80	100	120	140	150	160	180	200	240
U-value W/m ² K - EN 14509 incl. joint section	0.681	0.512	0.412	0.346	0.298	0.279	0.261	0.233	0.210	0.176
weight kg/m ²	16.39	18.79	21.19	23.59	25.99	27.19	28.39	30.79	33.19	37.99
fire resistance*	EI 30	EI 90	EI 90	EI 180	EI 180	EI 180	EI 180	EI 180	EI 240	EI 240

*Certificates must be checked for the usage case in question (horizontal/vertical/span width etc.).

MANUFACTURING TOLERANCES

in line with EN 14509

SOUND INSULATION

32 dB (frequency dependent)

MANUFACTURING LENGTHS

max. 15.6 m (extra-long transport from 13.6 m) ATTENTION! Danger of kinking due to heavy weight in the case of long panels!

SPAN WIDTH TABLES

according SandStat. calculation

FIRE BEHAVIOR

in line with EN 13501-1, Euroclass A2s1d0, **non-combustible**

BRUCHA



fire protection

BRUCHA panel WP-A

Acoustic wall exposed fastened

DESIGN AND SURFACES Standard - coil-coated, hot-dip galvanised steel sheet

EXTERIOR

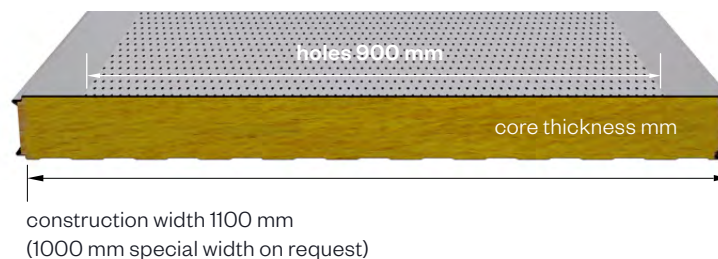
- Exposed side 25 µm polyester coating with a PVC protective film (not UV-resistant - protect from direct sunlight).
The film must be removed before installation or immediately afterwards.
- profile 1 = Standard, for other profiles see WP-A PROFILE options
- metal gauge: 0.6 mm (smaller metal gauge on request)

INTERIOR

- Exposed side 25 µm polyester coating with a PVC protective film (not UV-resistant - protect from direct sunlight).
The film must be removed before installation or immediately afterwards.
- profile 2
- hole proportion: 32.5 %
- bore diameter: 3 mm round bore, offset (5 mm distance)
- holes: DIN RV 3-5 (R3T5) (730-000)
- metal gauge: 0.6 mm (smaller metal gauge on request)

INSULATION CORE

- structural, web-oriented mineral fibre wool
- securely attached to the sheet steel shell
- density approx. 120 kg/m³, 140 kg/m³ available on request
- mat: glass fibre mat SM60/10 as trickle protection



STANDARD COLORS

in accordance with BASIC color range

PANEL CONNECTION

Tongue and groove system in which the panels interlink precisely with no thermal bridge.

TENDER TEXT

download from: bruchacom

EXTERNAL MONITORING

National and international tests and quality standards. We will send the certificates on request.

VAPOUR DIFFUSION

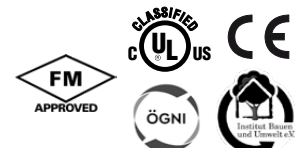
Determined by climatic conditions inside building. Panels must be installed vapour tight.

PANEL INSTALLATION

When working with our products, please follow our installation guidelines at bruchacom/downloads



bruchacom



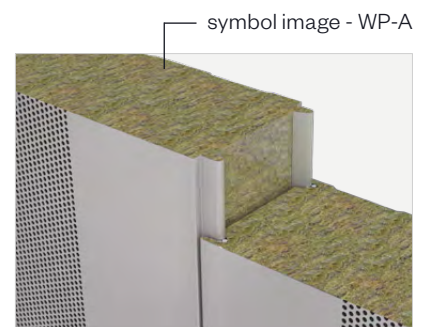
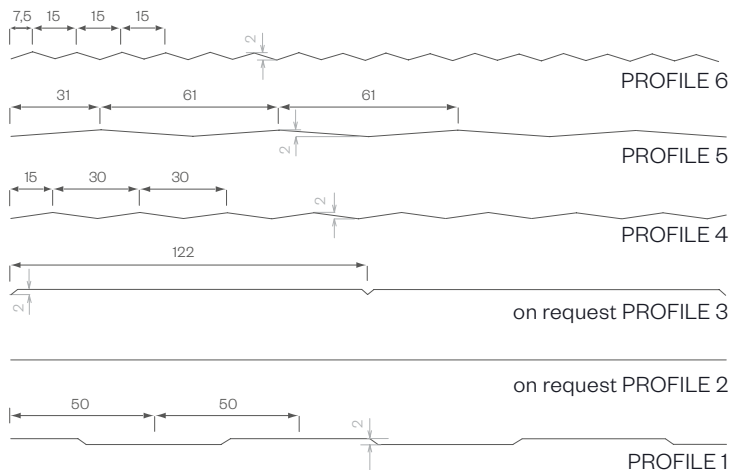
BRUCHA panel WP-A

Acoustic wall exposed fastened

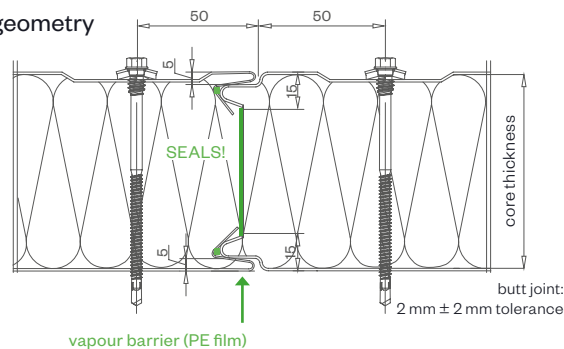


fire protection

exterior PROFILE options - close-up



DETAIL/joint geometry



PANEL TYPE	WP-A 60	WP-A 80	WP-A 100	WP-A 120	WP-A 140	WP-A 150	WP-A 160	WP-A 180	WP-A 200	WP-A 240
core thickness mm	60	80	100	120	140	150	160	180	200	240
U-value W/m ² K - EN 14509 including joint section	0.681	0.512	0.412	0.346	0.298	0.279	0.261	0.233	0.210	0.176
weight kg/m ²	16.39	18.79	21.19	23.59	25.99	27.19	28.39	30.79	33.19	37.99

MANUFACTURING TOLERANCES

in line with EN 14509

SOUND INSULATION

32 dB (frequency dependent)

MANUFACTURING LENGTHS

max. 15.6 m (extra-long transport from 13.6 m) ATTENTION! Danger of kinking due to heavy weight in the case of long panels!

SOUND-ABSORBER CLASS - B

SOUND ABSORPTION COEFFICIENT α_w

0,90 in line with test report MA39-VFA 2017-0169.02

APPROVAL based on general building inspection approval Z-10.49-610

FIRE BEHAVIOR

in line with EN 13501-1, Euroclass A2s1d0, **non-combustible**

BRUCHA®

**PANELS
THAT
CONNECT.**

PRODUCTS

- > BRUCHA panels
- > Cold walk-ins
- > Doors
- > EPS insulation boards
- > Accessories

SERVICES

- > Assemblies for special and cold room construction
- > Maintenance and service
- > BRUCHA Food Engineering

Head office/plant

BRUCHA GesmbH
Rusterstraße 33
3451 Michelhausen
Austria
T +43 2275 5875
E office@bruchha.com

en_08/2023 - All information is considered to be subject to errors in composition or printing errors.

bruchha.com