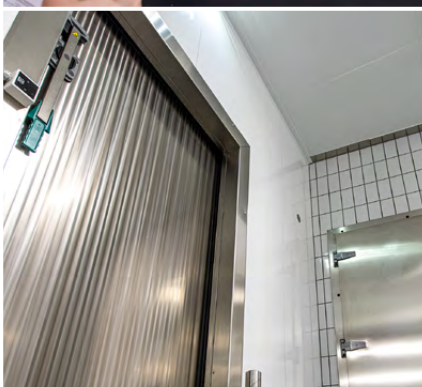
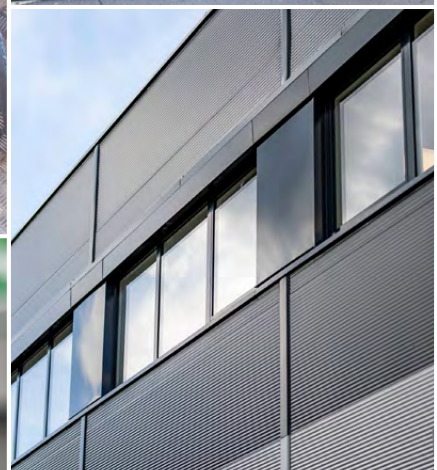


BRUCHA®



Special & cold room construction



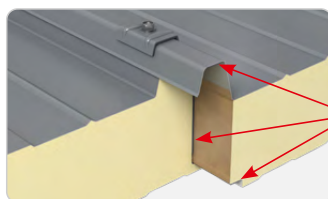
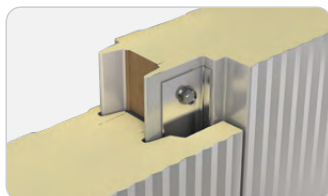
All from one source

- 75 years of experience
- production in Austria
- customised professional solutions
- in-house experienced assembly



PANELS

with polyurethane
PIR+/ iQTec
and
mineral wool core/
fire protection
for cold storage
and deep-freeze
construction.



optimum
condensate
protection through
**TRIPLE SEALING
SYSTEM**



Symbolic pictures
PIR+ wall WP,
facade Premium FP-P,
PIR+ roof DP
and
mineral wool core
wall WP-F

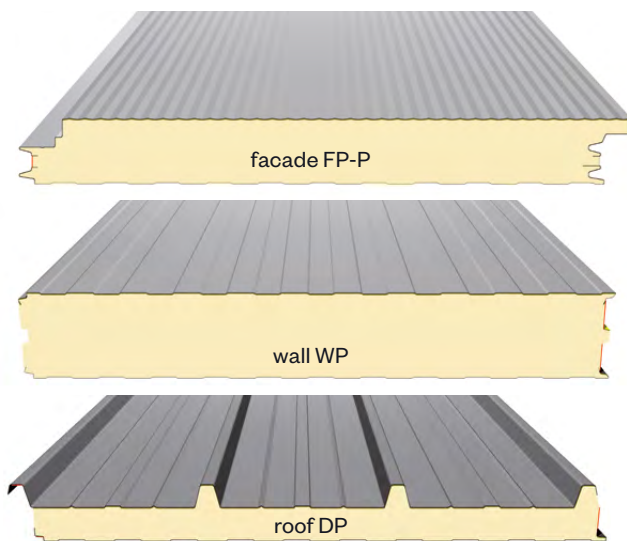
BRUCHA panel fire protection

The joints of the panels in the plug-in system can be assembled precisely and free of thermal bridges and form a homogeneous surface.

Owing to the high degree of industrial prefabrication, the assembly takes minimum time and the structure can be handed over for use quickly.

The impermeable core consists of structural, base-aligned mineral wool, connected to the steel sheet shell in a thrust-proof manner.

FIRE BEHAVIOR according EN 13501-1
Euroclass A2s1d0, non-combustible



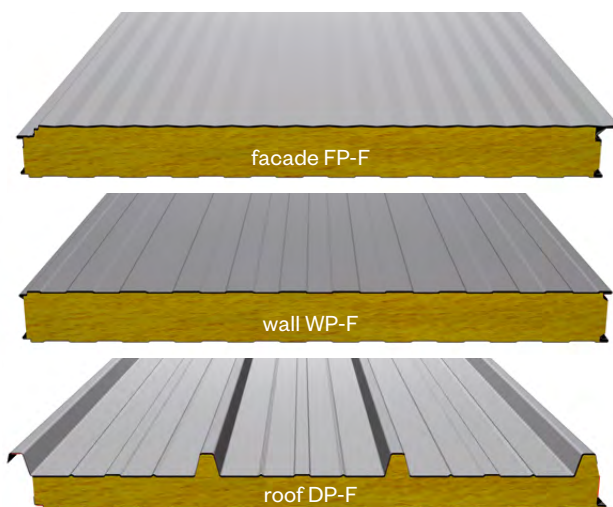
BRUCHA panel PIR+/ iQTec

The economical planning frame of 1000 mm or 1100 mm enables a practical and clean solution for outdoor and indoor walls.

The BRUCHA profile diversity offers maximum planning-related freedom for designing the object together with the comprehensive color spectrum. Thanks to 16 different panel thicknesses – from 30 to 250 mm – all the structural engineering requirements can be fulfilled. Can be used on any sub-construction such as wood, steel or concrete.

FIRE BEHAVIOR according EN 13501-1 Euroclass Bs1d0

The BRUCHA system design is an extremely favourable design owing to the big purlin distances.



<https://www.brucha.com/en/products/panels>

HIGH BAY CONSTRUCTION

Maximum possible storage capacity for pallet storage.



BRUCHA panel system design

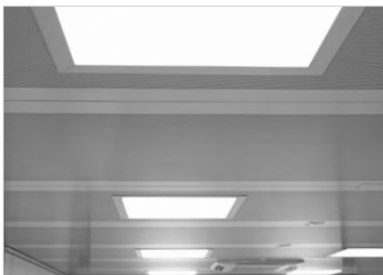
best suited for an optimum storage environment such as:

- special leak tightness
- gas-tight outer casing "Oxy-Reduct-Technology"
- temperature range up to -40 °C
- PIR+ or fire protection design



SPECIAL CONSTRUCTION

Customised solutions tailored to your requests.



- Laboratory and testing rooms for the automotive industry
- cold smoking rooms
- spiral freezer
- noise protection claddings
- special designs upon request

- custom-made stainless steel fender
- impact protection bollard made of stainless steel
- welded stainless steel flooring 1.4301
- welded stainless steel walls 1.4301



COLD STORAGE & FREEZING ROOMS

TOP quality in cold storage construction based on decades of experience.

BRUCHA®

We offer
all from one source:

**CONSULTING
PLANNING
PRODUCTION
ASSEMBLY**

Our experienced
assembly team builds
your cold storage or freezing store,
using state-of-the-art technology,
economically and individually:

**FLEXIBLE • QUICK • CLEAN
TECHNICALLY PERFECT**

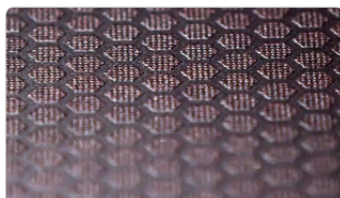
up to a core thickness of 250 mm
self-supporting covers up to 8 metres
self-supporting walls up to 14 metres

EVOLUTION | Standard & Individual

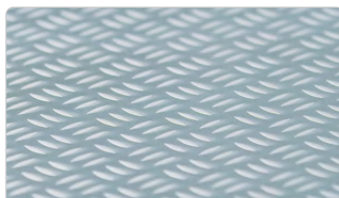
The Fast-Build Walk-In



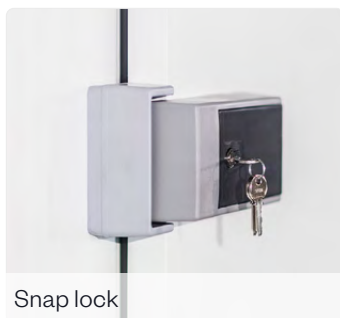
- Extremely fast assembly and easy dismantling.
- Standard grid dimension 400 mm, up to 50 mm possible.
- Corrosion-protected hook assembly.
- Self-centering tongue and groove connections.
- Rising hinges ensure minimum abrasion of the door seals.
- Highly stable thanks to the hook lock connection at a distance of 400 mm.



Hexa Grip floor



Stainless steel floor



Snap lock



Brucha rising hinge



brucha.com

SURFACES

for the cold storage construction and temperature-regulated rooms.

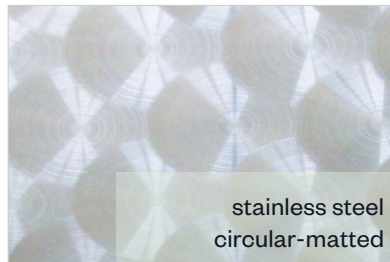


STEEL SHEET galvanised
plastic-coated
Standard sheet thickness 0.63 mm

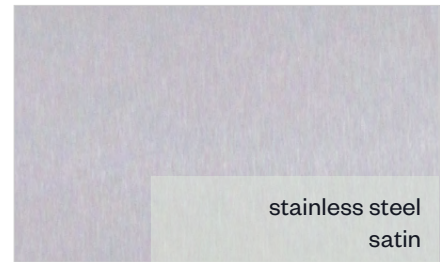
Polyester PE PURE 25 µm
Polyester PE 25 µm
Hard PVC foil coating 150 µm
PUR-PA 50 µm

STAINLESS STEEL 1.4301 Standard or
1.4404 Superior
Standard thickness 0.7 mm

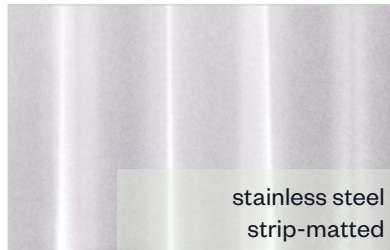
tested
food grade



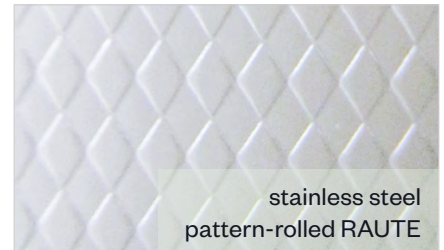
stainless steel
circular-matted



stainless steel
satin



stainless steel
strip-matted



stainless steel
pattern-rolled RAUTE

BRUCHA & voestalpine **together on the way to a green future** with greentec steel edition for the fast-build walk-in coolers & freezers



Premium quality
with reduced carbon footprint

voestalpine

ONE STEP AHEAD.

BRUCHA panel Solidboard®

Hygienically pure, easy to clean and extremely impact-resistant.

Areas of application

- Cheese dairies, milk, meat and fish processing plants
- Production of bakery products and pasta
- Beverage manufacturers
- Public health systems
- Clean rooms and sanitary facilities
- Cold storage rooms



Solidboard

glass-fibre reinforced
synthetic resin plate
1.4 to 2.3 mm thick



Designs

- **BRUCHA panel Solidboard®** refurbishment for different subsurfaces such as brickwork, floor tiles, panels, etc.
- **BRUCHA panel Solidboard®** glued at factory on one side on wall or facade panel, for interior use.
- **BRUCHA panel Solidboard®** double-sided foamed, shear resistant bond with the covers, core thickness 80, 100 and 140 mm*.
- **BRUCHA panel Solidboard® EPS** Insulation core made of EPS, can be delivered in thicknesses from 20 to 300 mm*.

*Shear-resistant connected to the cover sheets.

CA/ULO STORAGE

Ripeness and storage rooms for farm-free foodstuffs.



CA warehouse

with special sealing system, produced to the highest quality standard in our own factory.



Temperature-regulated rooms and halls

for perfect storage and ripening with controlled atmosphere (1 % to 3 % oxygen) are constructed professionally by our experienced assembly team directly at the customer's location.

Areas of application

- Fruits and vegetable storage for preserving the fruit quality
- optimised long-term storage



CLEAN ROOM CONSTRUCTION

Tailor-made system solutions for maximum hygiene demands.



The BRUCHA panel for your clean room

- Self-supporting without a complex sub-structure
- Media apertures of all kinds are prefabricated at the factory
- Quick, easy assembly in the modular system
- Flush-mount design (wall/window/floor/doors)
- Large span widths in case of ceiling liners
- Accessible ceiling designs

From the design right up to the final inspection everything from one source:



Use the BRUCHA panel system to meet the requirements in a highly-sensitive field, where it all depends on lowparticle air, efficiently and economically.



HINGED & SLIDING DOORS

operation/cooling & freezing rooms



doors & gates

customized productions

for interior & exterior application



fire protection doors
& gates in certified
quality **EI30 / EI90**

always one step ahead

We have always been a pioneer in the implementation of efficient energy-saving measures. Numerous actions and projects have been realized in recent years to significantly improve our energy consumption. The implementation of further measures leads to continuous improvements of our production processes, our products and most importantly to new product developments.

Bringing proof that we are a responsible manufacturer, we are certified according to the environmental management system **ISO 14001:2015**. All BRUCHA panels with PIR+ and mineral wool core are certified according to the standard for responsible sourcing **BES 6001** - assessment score - **Very Good**.



assessment score

Very Good



PRODUCTS

- > BRUCHA panels
- > Cold walk-ins
- > Doors
- > EPS insulation boards
- > Accessories

SERVICES

- > Assemblies for special & cold room construction
- > Maintenance and service
- > BRUCHA Food Engineering

Headquarters/production

BRUCHA GesmbH
Rusterstrasse 33
AT-3451 Michelhausen

T +43 2275 5875
E office@brucha.com



<https://www.eigner-druck.at/printed> according Guideline
"Druckerzeugnisse" of the Austrian environmental label, UW 981

brucha.com