

BRUCHA®



Climate test chamber



**customised
solutions**

- Stainless steel welded
- Temperature range from - 40 °C to + 100 °C

BRUCHA Climate test chamber

CUSTOMISED PRODUCTS AT THE HIGHEST LEVEL

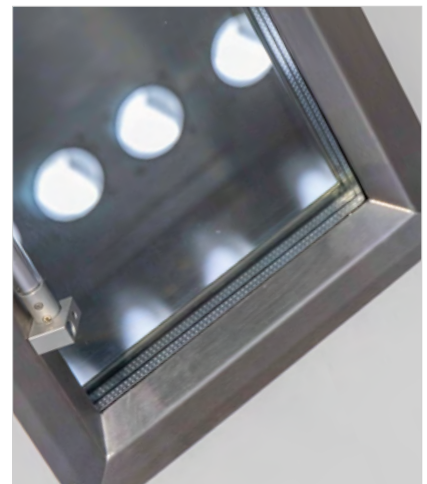
BRUCHA has specialised in cooling and insulation for more than 75 years. This decades-long experience flows into the development and realisation of modern climatic test chambers in accordance with the constantly growing requirements, and the climatic test chambers are always customised solutions, manufactured according to the customer's requirements.

ENVIRONMENTAL SIMULATION - Humidity, temperature, sunlight, oxygen concentration, altitude climate and much more are changed here for quality assurance tests on a wide range of products from the pharmaceutical, food and automotive sectors.

closed front view



- STAINLESS STEEL door hinge, 3-way adjustable, rising
- Press lever lock & solenoid interlock
- Cable gland
- Glazing - triple ISO-VSG in upright sash with heated STAINLESS STEEL frame & rod light



Climate test chamber



Rear view - BRUCHA panel EVOLUTION



- STAINLESS STEEL round, 4-way & 5-way feed-through with flange
- STAINLESS STEEL square
- Triple feed-through with flange
- STAINLESS STEEL round, feed-through with Welding neck flange
- Square base tray with feed-throughs



EXECUTION DETAILS

Sizes: 1.000 x 1.000 x 1.000 mm to 2.500 x 2.500 x 2.500 mm - other sizes available on request

Temperature range:
from - 40 °C to + 100 °C

Surfaces:
STAINLESS STEEL 1.4301 or 1.4404
Inner shell welded

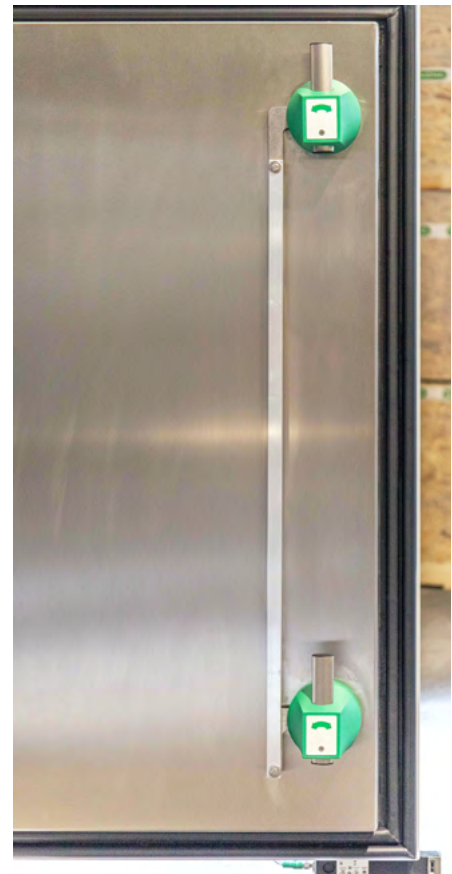
Feedthroughs - heated as well:
Prepared for the installation of cable ducts (Roxtec, Ikotec, etc.)

Insert sheets:
for on-site installation parts

All production takes place at the BRUCHA plant in Lower Austria.

Double-leaf freezing door.

- STAINLESS STEEL
Espagnolette bolt,
inactive leaf inside
- 2-point locking system





BRUCHA Climate test chamber

equipped with laser-cut STAINLESS STEEL plates for on-site installation in the climatic test chamber.

For detailed questions about your project, please get in touch with your personal contact from the BRUCHA team and we look forward to hearing from you.

As a responsible and forward-thinking manufacturer, BRUCHA is certified in accordance with the **ISO 14001:2015** environmental management system. All BRUCHA panels are labelled in accordance with the **BES 6001 - Very Good** - standard for responsible procurement.



assessment score

Very Good



PRODUCTS

- > BRUCHA panels
- > Cold walk-ins
- > Doors & gates
- > Special construction/ climate test chamber
- > Accessories

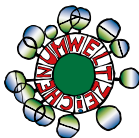
SERVICES

- > Assemblies for construction of special and cold rooms
- > Maintenance and Service
- > BRUCHA Food Engineering

Head Office/Production

BRUCHA GesmbH
Rusterstraße 33
AT-3451 Michelhausen

T +43 2275 5875
E office@brucha.com



<https://www.eigner-druck.at/printed> according Guideline "Druckerzeugnisse" of the Austrian environmental label, UW 981

brucha.com

en_10/2024 - All information is subject to printing and typographical errors.