

# BRUCHA = TOP-Design



"Our aspiration is to produce a highly intelligent design product with which you can turn all your design ideas into reality, efficiently and sustainably environmentally friendly."

*The Brucha team*



BRUCHA Headquarters/Production in Lower Austria



station building | Radius façade panel, vertical mounting

- > unlimited variety of colours
- > high-quality surface finishing
- > fantastic design possibilities



paper mill | façade Premium in wooden optics & RAL 9006



mushroom growing | BRUCHA panel façade Premium RAL 1035

- > ultra-modern, yet timeless façades
- > element design according to design specification
- > certified fire protection properties



gas station gastro-shop | BRUCHA panel façade RAL 3020

PANELS  
THAT  
CONNECT.

**BRUCHA®**

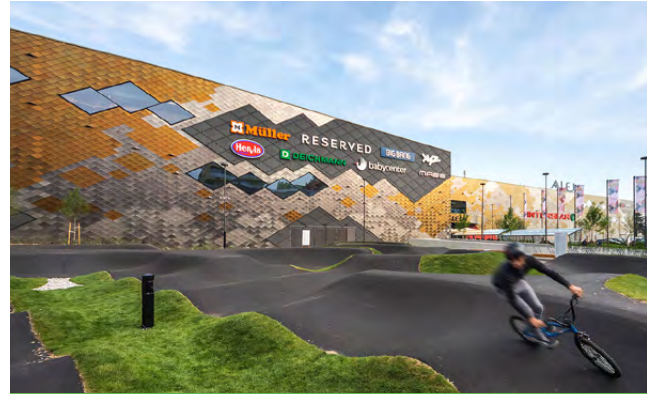
# BRUCHA panel



indoor swimming pool | BRUCHA panel Carrier-System

- > produced in Austria
- > low CO<sup>2</sup> emissions, high degree of prefabrication

- > customised special production
- > extensive range of profiles



shopping center | BRUCHA panel Carrier-System

- > can be combined in many ways
- > deliverable in lengths up to 21,5 metres



production area | BRUCHA panel façade PIR+ & fire protection

- > proven series product
- > intelligent and flexible façade element



commercial building | façade panel corten steel surface



data centre | BRUCHA panel fire protection incl. corner panel



logistic park | BRUCHA façade Premium RAL 2010 and 7016

We are looking forward to realise your design-ideas!

headquarters/plant  
BRUCHA GesmbH  
Rusterstraße 33  
AT-3451 Michelhausen

contact  
T +43 2275 5875  
E office@brucha.com

[brucha.com](http://brucha.com)

**BRUCHA**<sup>®</sup>