

BRUCHA SPECIAL OFFER FOR ARCHITECTS.



TOP SERVICE FOR YOUR PLANNING PROJECT

- > Suggested price within 24 hours.
- > We provide samples of profile variants and panel design for your product configuration.
- > We are happy to advise you in the selection of the Substructure.
- > We will adjust our standard details individually to your planned object.
- > We are happy to provide suitable text modules for your call for tenders.
- > Sampling processes at the client's premises are possible at any time.
- > We offer short-term troubleshooting on the construction site by our experienced project managers on demand.



APPLICATIONS



sales spaces/retail



office and commercial construction



industrial construction

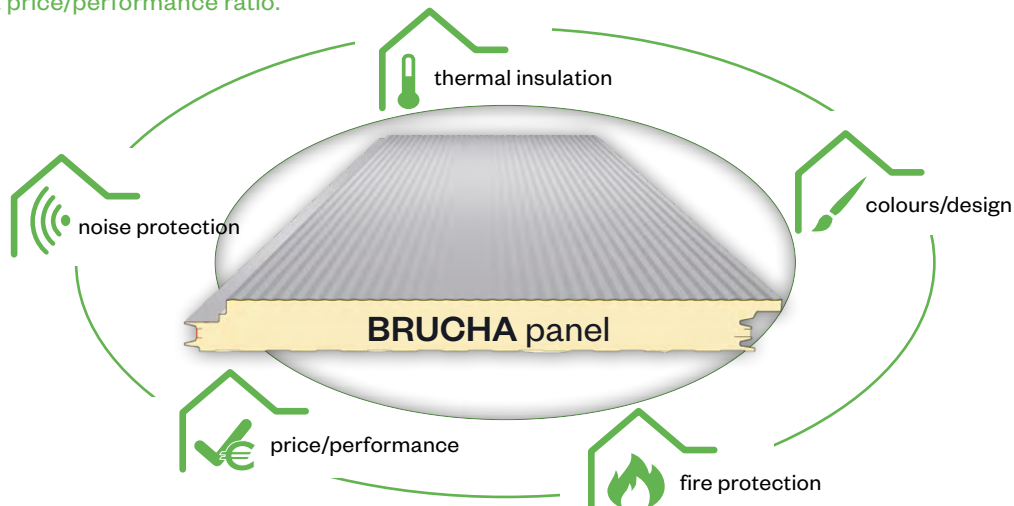


storage and processing



public institution

ALL in ONE - the multifunctional product with the best price/performance ratio.



PANELS
THAT
CONNECT.

BRUCHA



WHY A BRUCHA PANEL?

Multi-shell system

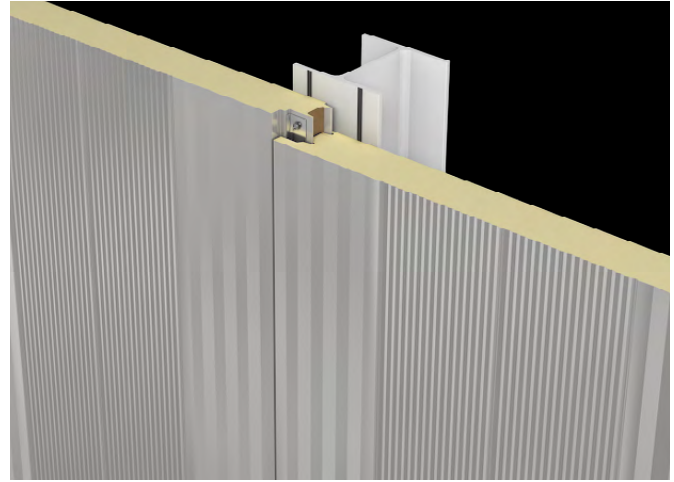
higher installation effort

more sources of error, higher costs



Single-shell sandwich panel system

fast - clean - cost-efficient



vs.

The intelligent façade element

now also available in the highest quality design and surface variety.

FACTS AND FIGURES

- > Available in any RAL + NCS colour + special designs, e.g. iridescent surface finishes.
- > Insulation core of the BRUCHA panels made of PIR+/nonhalogen or mineral wool (fire protection).
- > Maximum panel length façade 16 m, wall 18.40 m and roof 21.50 m.
- > Heat insulation comparison: 5 cm BRUCHA panel PIR+ = about 170 cm brick wall.
- > Around 4 million m² of BRUCHA panels delivered and installed - world-wide every year.
- > Research, production and product development based on 75 years of experience.
- > BRUCHA is the **no. 1** choice of architects in Austria!
- > More than 2500 satisfied customers in the world every year prove the quality of the tried and tested product.
- > More than 38 million m² of panels have been produced in our factory and delivered within the last 10 years.
- > 100 % made in Austria - premises more than 265.000 m² with branches in Styria & Vorarlberg.
- > The complaint rate is below 0,5 %.
- > Regarding to the environment and future generations BES 6001 & Cradle to Cradle environmental standards.
- > All relevant certificates are available and will be presented as required, incl. FM approval.
- > Over 95 % of the production energy comes from regenerative resources.