

UL file no. R 39859 panels for use in windstorm-rated assemblies (ZHLL) (ZHLA) and Florida building code testing application

Standard (S/TAS)

Models:

WP 60 – 240, FP-P 80 – 200 panels with PUR-PIR foamed insulation core, both sides with steel-sheet surfaces

WP-F 60 – 240, FP-F 60 – 240 panels with mineral wool insulation core, both sides with steel-sheet surfaces

Models:

WP 40 – 80, WP 100 – 220, FP 60 – 160, FP-P 80 – 200 out of continuous or discontinuous production of Brucha with foamed PUR-PIR insulation core, both sides with steel-sheet surfaces

Additional installation details:

step 1 > first of all check the dimensions and quantity of received panels ref. to the order

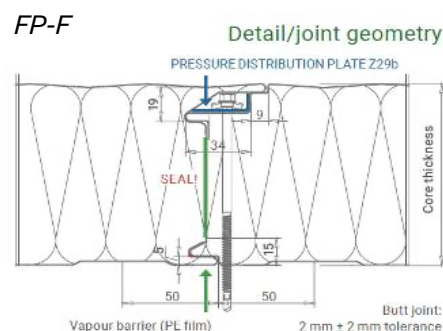
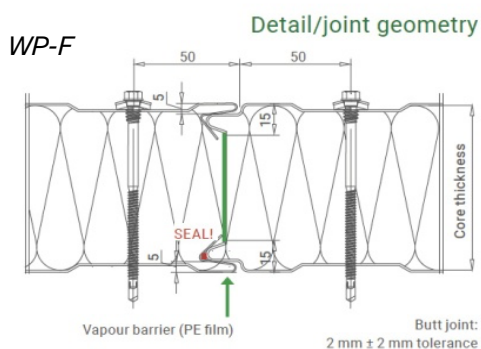
step 2 > Follow our handling and mounting instructions under – <https://www.brucha.com/en/downloads-certificates>

step 3 > check the presence of necessary joint – gaskets (thickness 5 mm) in the panel groove –spring connection

step 4 > Check and control of quantity and type of fixing material – according to static requirements – for installation of Brucha panels on the corresponding substructure (wood or steel etc.)

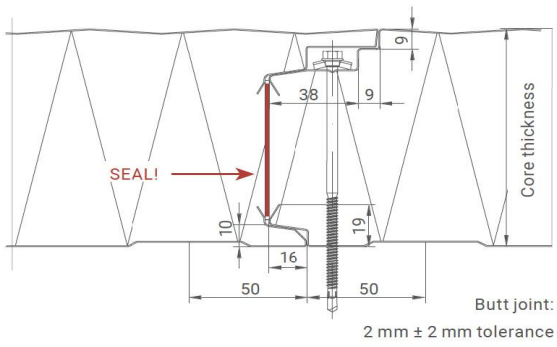
step 5 > Assemble of seamless panel-connections with suitable seals and edge flashing-profiles, made of steel. Adjacent components to have the required air tightness and no water penetration within the - connection areas

step 6 > panel joint – For correct assembly follow the instruction for the tongue and groove connection including the screw connection below.



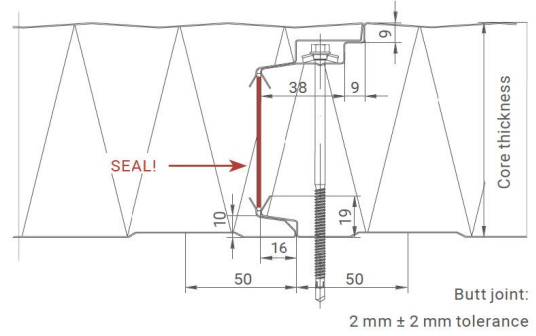
FP

Detail/joint geometry



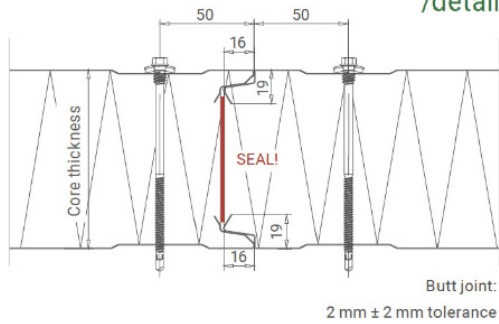
FP-P

Detail/joint geometry



WP

Joint geometry up to 80 mm core thickness /detail



Joint geometry from 100 mm core thickness /detail

