

Ref. UL file no. R 39831
Partition panel unit with fire resistance

Models:

WP-F 100, WP-F 120, WP-F 140 > **1 hour**

WP-F 150, WP-F 160, WP-F 180, WP-F 200, WP-F 240 > **2 hours**

Models:

FP-F 100, FP-F 120, FP-F 140 > **1 hour**

FP-F 150, FP-F 160, FP-F 180, FP-F 200, FP-F 240 > **2 hours**

Additional installation details:

step 1 > first of all check the dimensions and quantity of received panels ref. to the order

step 2 > Follow our handling and mounting instructions under – <https://www.brucha.com/en/downloads-certificates>

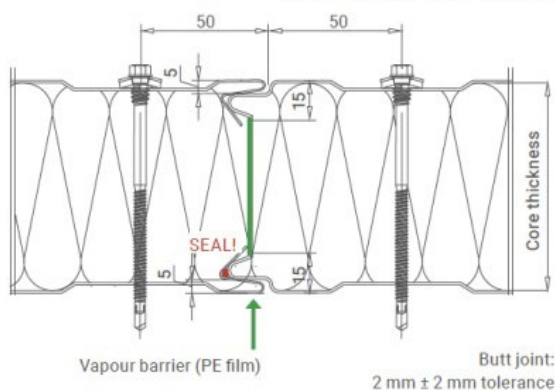
step 3 > Joint other than tongue and groove connection have to be filled completely with mineralwool (Rockwool XL 120 kg) approx. 20 – 30 mm thick to maintain fire resistance. See the details under handling and mounting instruction.

step 4 > Please fill inserting of fire protection seal (type: Hilti CFS-S Sil) into groove-spring connection of panel joint

step 5 > covering of panel connections – joints with flashing – profiles , fixing of them with stainless steel screws or rivets to panels and connecting components

step 6 > panel joint- according to the picture you will find the instructions for the tongue and groove connection including the screw connection

Detail/joint geometry



Detail/joint geometry

