

**UL file no. R 39859 panels for use in windstorm-rated assemblies (ZHLL) (ZHLA) and Florida building code testing application**

**Standard (S/TAS)**

**Models:**

WP 60 – 240, FP-P 80 – 200 panels with PUR-PIR foamed insulation core, both sides with steel-sheet surfaces

WP-F 60 – 240, FP-F 60 – 240 panels with mineralwool insulation core, both sides with steel-sheet surfaces

*Models:*

WP 40 – 80, WP 100 – 220, FP 60 – 160, FP-P 80 – 200 out of continuous or discontinuous production of Brucha with foamed PUR-PIR insulation core, both sides with steel-sheet surfaces

**Additional installation details:**

**step 1** > first of all check the dimensions and quantity of received panels ref. to the order

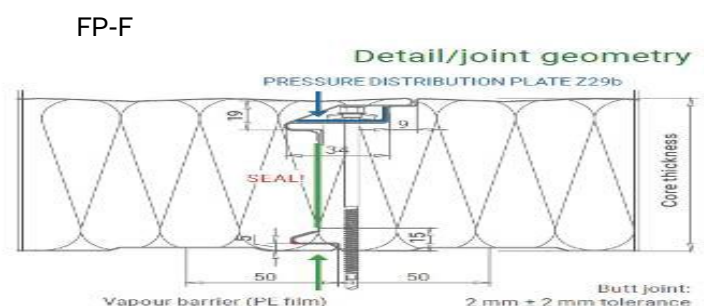
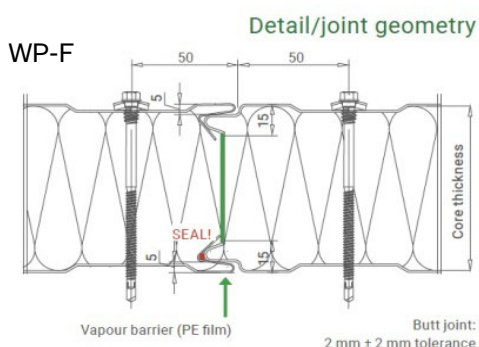
**step 2** > Follow our handling and mounting instructions under – <https://www.brucha.com/en/downloads-certificates>

**step 3** > check the presence of necessary joint – gaskets (thickness 5 mm) in the panel groove –spring connection

**step 4** > Check and control of quantity and type of fixing material – according to static requirements – for installation of Brucha panels on the corresponding substructure (wood or steel etc.)

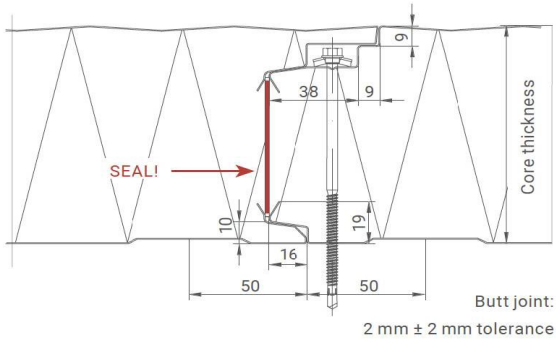
**step 5** > Assemble of seamless panel-connections with suitable seals and edge flashing-profiles, made of steel. Adjacent components to have the required air tightness and no water penetration within the - connection areas

**step 6** > panel joint – For correct assembly follow the instruction for the tongue and groove connection including the screw connection below.



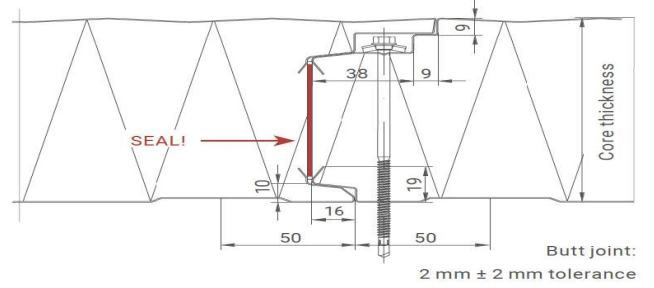
FP

Detail/joint geometry



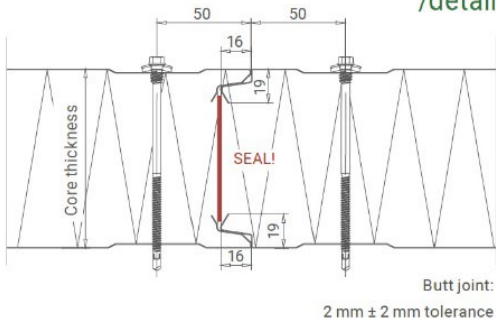
FP-P

Detail/joint geometry



WP

Joint geometry up to 80 mm core thickness /detail



Joint geometry from 100 mm core thickness /detail

