

# Walk-In EVOLUTION | Standard

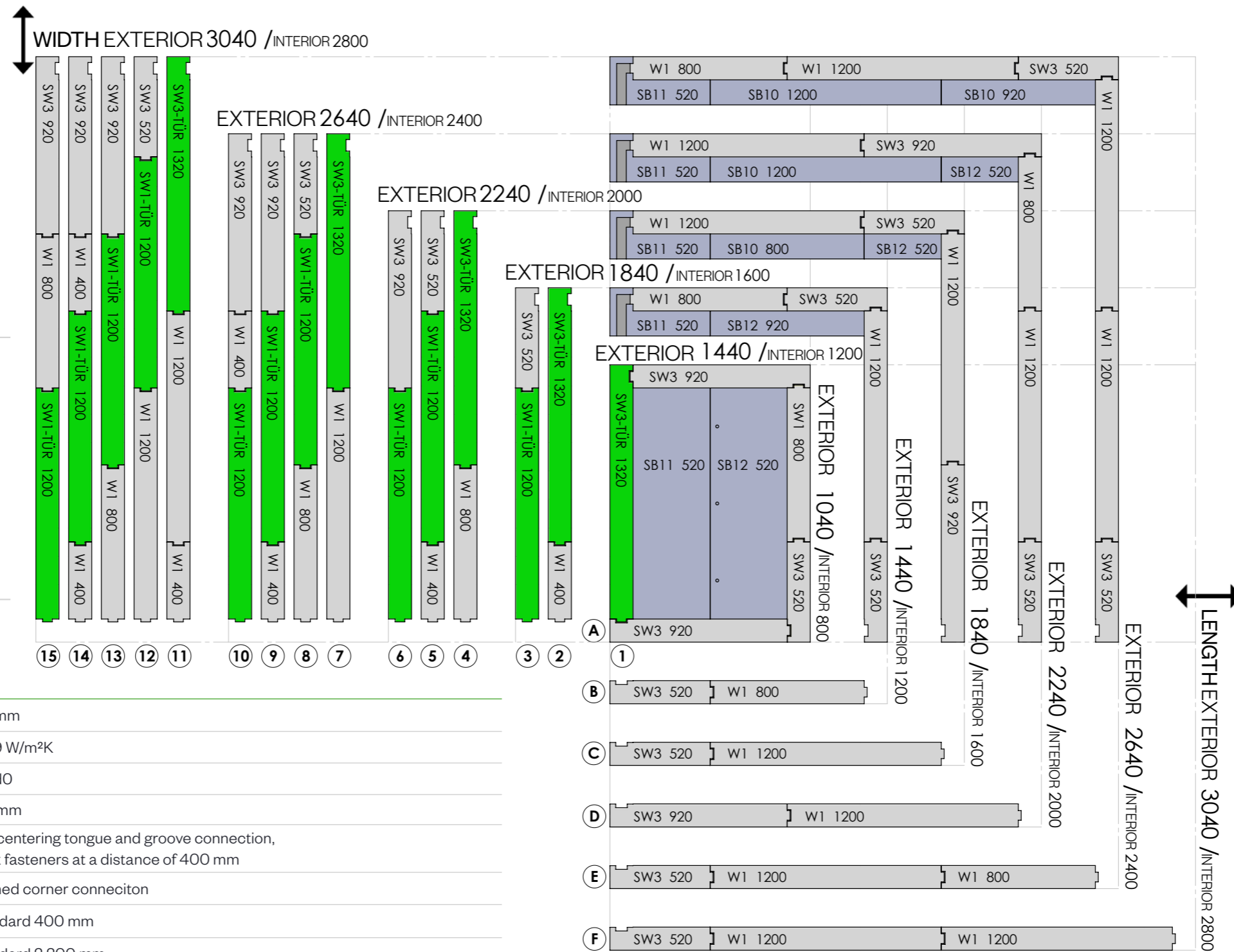
# Cell grid EVOLUTION

# Standard

## DOOR-VARIANTS

green elements  
=  
door elements

Through rotation of the cold room, door elements are possible on all four pages.



in  
400 mm grid  
any  
widenable

any length  
is with  
any width  
combinable

CORE THICKNESS  
=  
120 mm

### TECHNICAL SPECIFICATIONS:

CORE THICKNESS	120 mm
U-VALUE ACCORDING EN 13165	0.179 W/m <sup>2</sup> K
BUILDING MATERIAL CLASS EN 13501-1	Bs2d0
DOOR LEAF THICKNESS	100 mm
ELEMENT CONNECTION	self-centering tongue and groove connection, hook fasteners at a distance of 400 mm
CORNER CONNECTION	foamed corner connection
GRID DIMENSIONS	Standard 400 mm
INTERIOR HEIGHT	Standard 2,200 mm
SURFACE EXTERIOR AND INTERIOR	Sheet steel, 0.6 mm, zinc-magnesium coating with modern corrosion protection, RAL 9010 pure white in 25 µm in the <b>greentec steel edition - premium quality with reduced CO2 footprint</b> , certified food safety
DOOR SIZE	clear width 1,000 / 2,000 mm, 800 / 2,000 mm
DOOR HANDLE	F 921G - Snap lock is included in every EVOLUTION scope of delivery.
FLOOR EXECUTION	distributed load approx. 3,000 kg/m <sup>2</sup> , R11: Hexa Grip 18 mm
PRESSURE COMPENSATION VALVE	included in all walk-ins, heated in deep-freeze cells

Hexa Grip Floor  
surface coated plywood with  
hexagonal imprint; anti-slip class R11  
DIN 51130:2010-10

